



CLOVIS, NEW MEXICO

RNAV (GPS) RWY 22

WAAS CH 41173 W22A	APCH CRS 218°	Rwy Idg 10,003 TDZE 4295 Arpt Elev 4295
--------------------------	------------------	---

AL-512 (USAF)

CANNON AFB (KCVS)

<p>  * When ALS inop, increase RVR to 40, vis to 3/4 mile. ** When ALS inop, increase vis to 1 1/4 miles. *** When ALS inop, increase CAT AB RVR to 55, vis to 1 mile; CAT CDE vis to 1 1/4 miles. </p>	<p> ALSF-1  MISSED APPROACH: Climb to 7000 direct JEBES, track 171° to CLINK and hold. </p>
--	--

ATIS 119.1 269.9	CANNON APP CON 118.425 352.1	TOWER 120.4 270.25	GND CON 121.9 275.8	CLNC DEL 120.2 293.225
---------------------	---------------------------------	-----------------------	------------------------	---------------------------

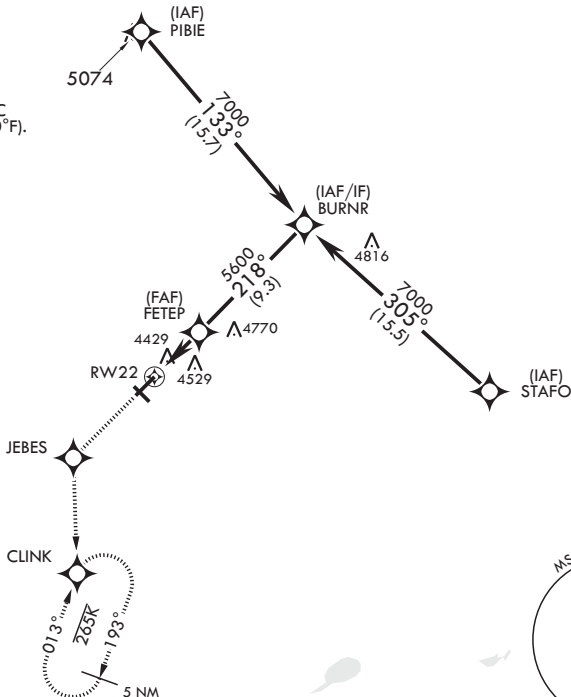
4866

For uncompensated
Baro-VNAV systems,
Procedure NA below -23°C
(-9°F) or above 54°C (130°F).

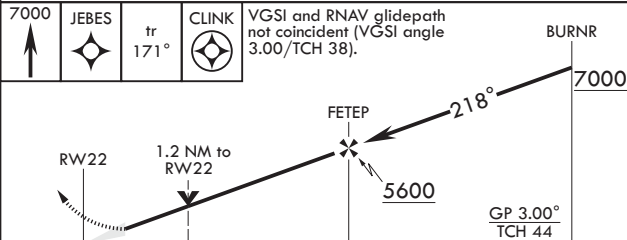
DME/DME RNP-0.3 NA

CAUTION: Group
4 WCH 19ft.

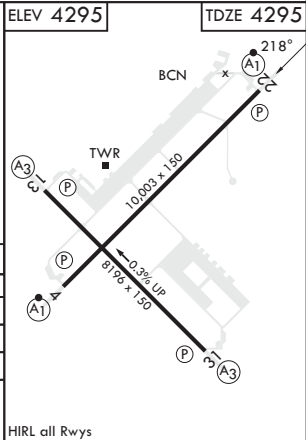
Missed approach
requires use of RNAV or
ATC RADAR monitoring.



EMERG SAFE ALT 100 NM 9000



	3.9 NM				
CATEGORY	A	B	C	D	E
LPV DA*	4495/24		200	(200-½)	
LNAV/VNAV DA**	4720/40		425	(500-¾)	
LNAB MDA***	4720/24	425 (500-½)	4720/40	425	(500-¾)
C CIRCLING	4840-1	545 (600-1)	4860-1½ 565 (600-1½)	5000-2¼ 705 (800-2¼)	5020-2½ 725 (800-2½)



CLOVIS, NEW MEXICO

34°23'N - 103°19'W

CANNON AFB (KCVS)

Amdt 6 16JUL20

RNAV (GPS) RWY 22

SW-1, 10 JUL 2025 to 07 AUG 2025

SW-1, 10 JUL 2025 to 07 AUG 2025