

CLOVIS, NEW MEXICO

RNAV (GPS) RWY 13

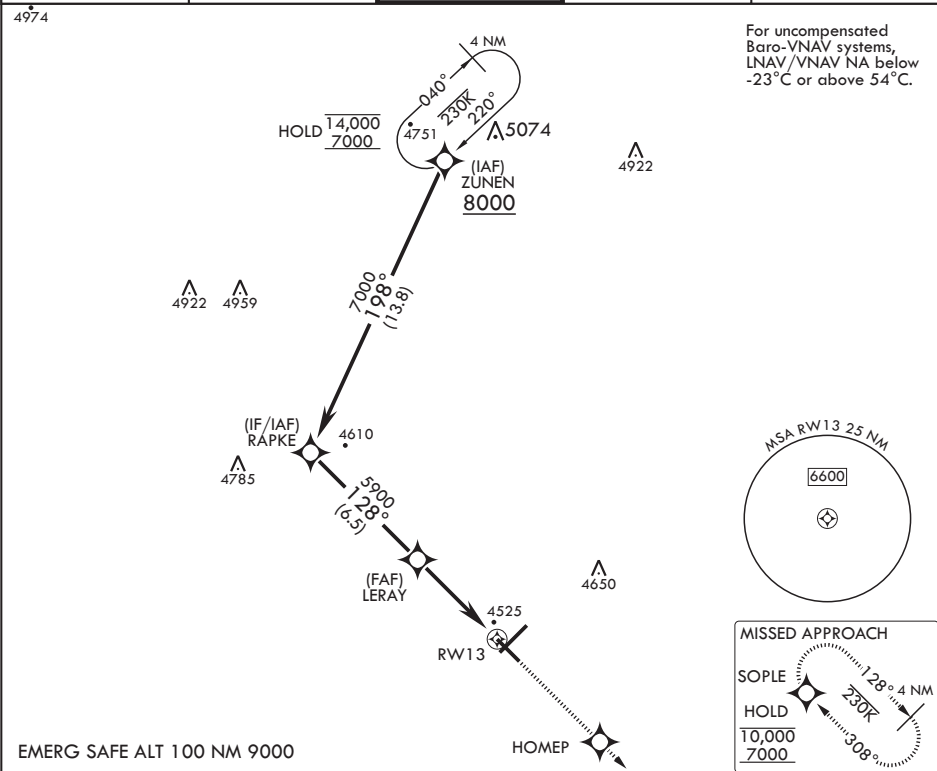
APCH CRS	Rwy Idg	8196
128°	TDZE	4294
	Arprt Elev	4295

AL-512 (USAF)

CANNON AFB (KCVS)

RNP APCH	SSALR	MISSED APPROACH: Climb to 7000 direct HOMEP, then track 128° to SOPLE and hold.
▼ * When ALS inop increase vis to 1 3/8 miles. ** When ALS inop, increase CAT AB vis to 1 mile, CAT CDE vis to 1 1/2 miles.	A3	

ATIS 119.1 269.9	CANNON APP CON 118.425 352.1	TOWER 120.4 270.25	GND CON 121.9 275.8	CLNC DEL 120.2 293.225
---------------------	---------------------------------	-----------------------	------------------------	---------------------------



RAPKE		VGSI and RNAV glidepath not coincident (VGSI Angle 3.00/TCH 37).			7000	HOMEP	tr 128°	SOPLE	ELEV 4295	TDZE 4294
7000		128°			LERAY	5900		1.5 NM to RW13		RW13
GP 3.04° TCH 45					4.8 NM					
CATEGORY	A	B	C	D	E					
LNAV/VNAV DA*	4766-1		472	(500-1)						
LNAV MDA**	4820-½ 526 (600-½)		4820-1	526	(600-1)					
CIRCLING	4840-1 545 (600-1)		4860-1½ 565 (600-1½)	5000-2¼ 705 (800-2¼)	5020-2½ 725 (800-2½)					
HIRL all Rwys										

CLOVIS, NEW MEXICO

34°23'N - 103°19'W

CANNON AFB (KCVS)

Amtrd 4 07OCT21

RNAV (GPS) RWY 13

SW-1, 10 JUL 2025 to 07 AUG 2025

SW-1, 10 JUL 2025 to 07 AUG 2025