

YUMA, ARIZONA

VOR/DME or TACAN RWY 17

VORTAC BZA 116.8 Chan 115	APCH CRS 167°	Rwy Idg TDZE 197 Arpt Elev 213
---	-------------------------	--

[USN]

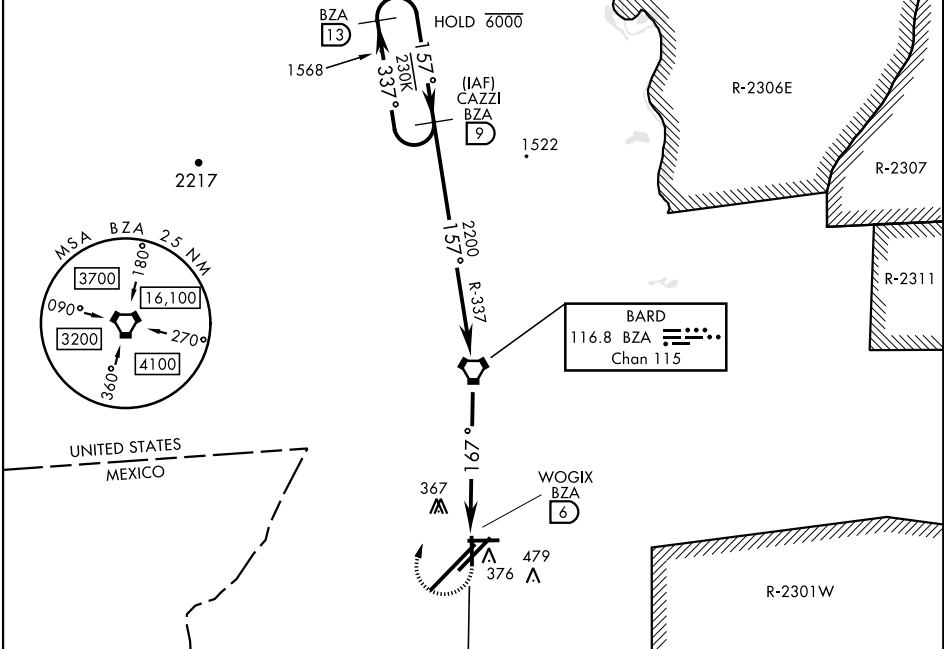
YUMA MCAS/YUMA INTL (KNYL)

MISSED APPROACH: Climb to 1000, then climbing right turn to 3800 direct BZA VORTAC and BZA R-337 to CAZZI and hold.	
---	--

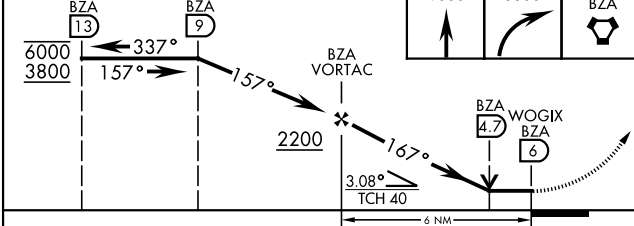
ATIS 118.8 273.5	APP CON 124.7 371.975	TOWER 119.3 (CTAF) 0 377.075	GND CON 121.9 314.0	CLNC DEL 118.0 336.4	ASR/ PAR
----------------------------	---------------------------------	---	-------------------------------	--------------------------------	-------------

Knots	60	120	180	240	300	360
V/V(fpm)	210	420	630	840	1050	1260

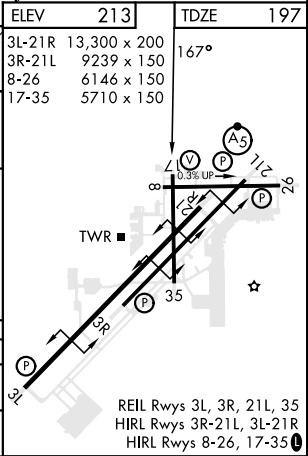
Min climb of 210 ft/NM to 3800 - Controlling Obstacle Ukn



ELEV	213	TDZE	197
3L-21R	13,300 x 200		
3R-21L	9239 x 150		
8-26	6146 x 150		
17-35	5710 x 150		



CATEGORY	A	B	C	D
S-17	660-1 463 (500-1)	660-1½ 463 (500-1½)		
CIRCLING	680-1 467 (500-1)	700-1 487 (500-1)	800-1½ 587 (600-1½)	800-2 587 (600-2)



YUMA, ARIZONA

32°39'N-114°36'W

YUMA MCAS/YUMA INTL (KNYL)

Amtd 5 22APR21

VOR/DME or TACAN RWY 17

SW-4, 10 JUL 2025 to 07 AUG 2025

SW-4, 10 JUL 2025 to 07 AUG 2025