

YUMA, ARIZONA

VOR RWY 17

VORTAC BZA <b>116.8</b> Chan <b>115</b>	APCH CRS <b>167°</b>	Rwy Idg <b>5710</b> TDZE <b>197</b> Arpt Elev <b>213</b>
---	-------------------------	--

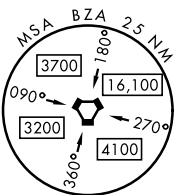
[USN]

YUMA MCAS/YUMA INTL (KNYL)



**MISSED APPROACH:** Climb to 1100, then climbing right turn to 2500 direct BZA VORTAC and hold.

ATIS	APP CON	TOWER	GND CON	CLNC DEL	ASR/ PAR
118.8 273.5	124.7 371.975	119.3 (CTAF) 0 377.075	121.9 314.0	118.0 336.4	




2217

HOLD 4000

1473

Temperature (°C)	Weight Loss (%)
200	0
300	0
337	15
357	15
400	15

IAF  
BARD  
116.8 BZA   
Chan 115

Free-body diagram of a joint showing a downward force of 167 N, a horizontal force of 367 N to the left, and a diagonal force of 376 N at an angle.

UNITED STATES  
MEXICO

EMERG SAFE ALT 100 NM 17,100

R-2301W→

ELEV	213	TDZE	197
3L-21R	13,300 x 200		
3R-21L	9239 x 150		
8-26	6146 x 150		
17-35	5710 x 150		
<p>TWR ■</p> <p>REIL Rwy's 3L, 3R, 21L, 35</p> <p>HIRL Rwy's 3R-21L, 3L-21R</p> <p>HIRL Rwy's 8-26, 17-35</p>			
FAF to MAP 6.0 NM			
Knots	60	90	120
Min:Sec	6:00	4:00	3:00
			2:24
			2:00

YUMA, ARIZONA

32°39'N-114°36'W

YUMA MCAS/YUMA INTL (KNYL)

Amdt 4 22APR21

VOR RWY 17

SW-4, 10 JUL 2025 to 07 AUG 2025

SW-4, 10 JUL 2025 to 07 AUG 2025