

TACAN Y RWY 3L

YUMA MCAS/YUMA INTL (KNYL)

TACAN NYL Chan 84	APCH CRS 039°	Rwy Idg 13,300 TDZE 195 Arpt Elev 213
-----------------------------	-------------------------	--

[USN]

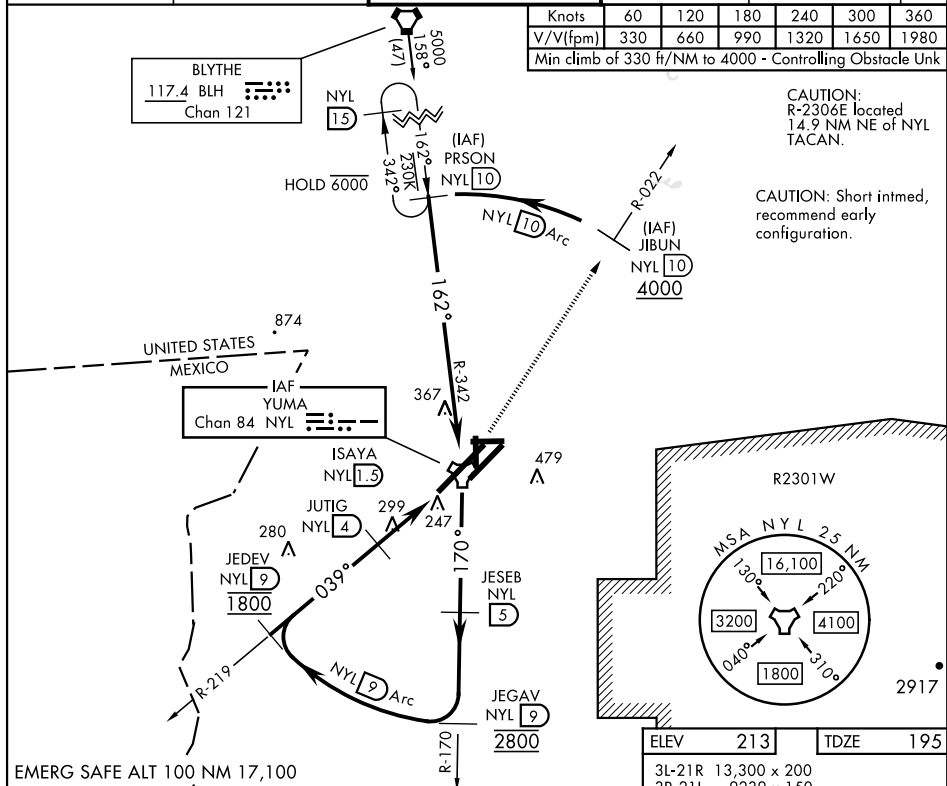
MISSED APPROACH: Climbing left turn to 4000, intercept NYL TACAN R-022 to JIBUN, cross JIBUN at or above 4000.

ATIS	APP CON	TOWER	GND CON	CLNC DEL	ASR/ PAR
118.8 273.5	124.7 371.975	119.3 (CTAF) 0 377.075	121.9 314.0	118.0 336.4	

Knots	60	120	180	240	300	360
V/V(fpm)	330	660	990	1320	1650	1980
Min climb of 330 ft/NM to 4000 - Controlling Obstacle Unk						

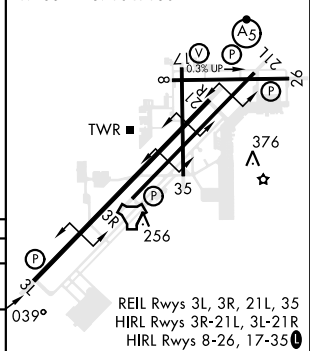
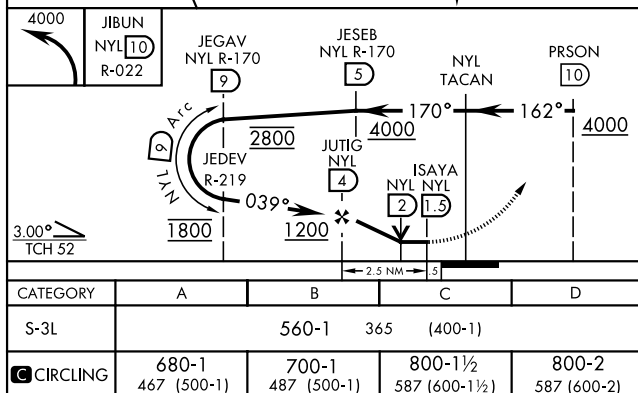
CAUTION:
R-2306E located
14.9 NM NE of NYL
TACAN.

CAUTION: Short intmed,
recommend early
configuration.



SW-4, 10 JUL 2025 to 07 AUG 2025

ELEV	213	TDZE	195
3L-21R	13,300 x 200		
3R-21L	9239 x 150		
8-26	6146 x 150		
17-35	5710 x 150		



YUMA, ARIZONA
Amdt 5 22APR21

32°39'N-114°36'W

YUMA MCAS/YUMA INTL (KNYL)

TACAN Y RWY 3L