

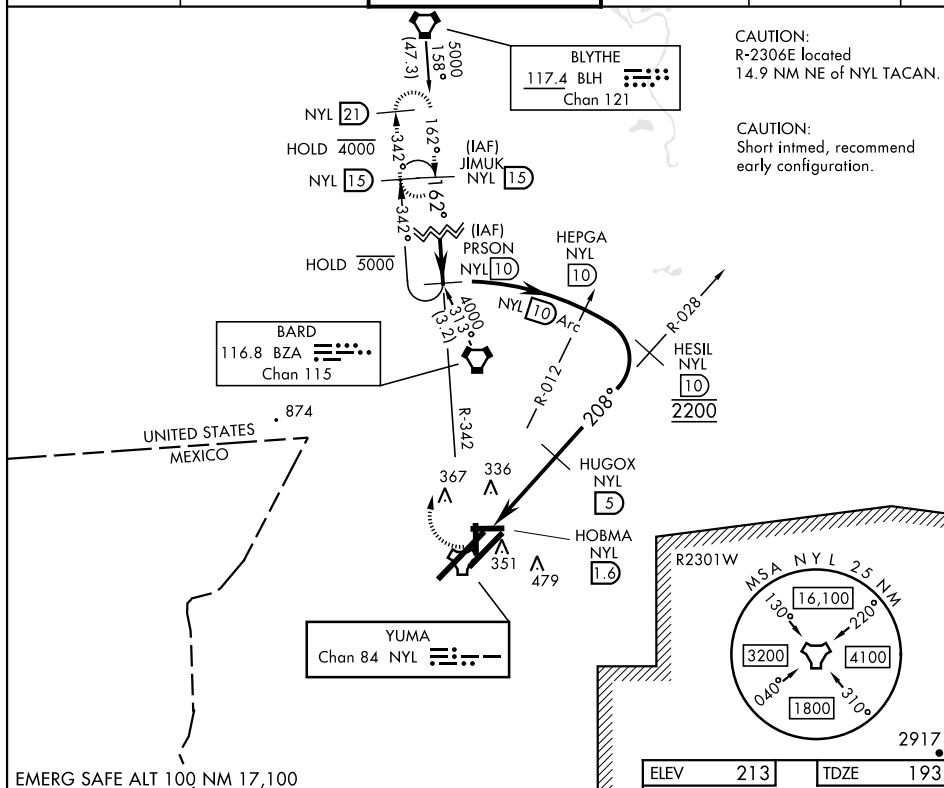
YUMA MCAS/YUMA INTL (KNYL)

TACAN NYL Chan <b>84</b>	APCH CRS <b>208°</b>	Rwy Idg <b>13,300</b> TDZE <b>193</b> Arpt Elev <b>213</b>
-----------------------------	-------------------------	--

[USN]

**MISSED APPROACH:** Climbing right turn to 4000 intercept NYL TACAN R-342 to JIMUK and hold, continue climb-in-hold to 4000.

ATIS	APP CON	TOWER	GND CON	CLNC DEL	ASR/ PAR
118.8 273.5	124.7 371.975	119.3 (CTAF) 0 377.075	121.9 314.0	118.0 336.4	



EMERG SAFE ALT 100 NM 17,100

[illegible]