

YUMA, ARIZONA

RNAV (GPS) RWY 21R

APCH CRS	Rwy Idg	13,300
213°	TDZE	193
	Arpt Elev	213

- (USN)

YUMA MCAS YUMA INTL (KNYL)

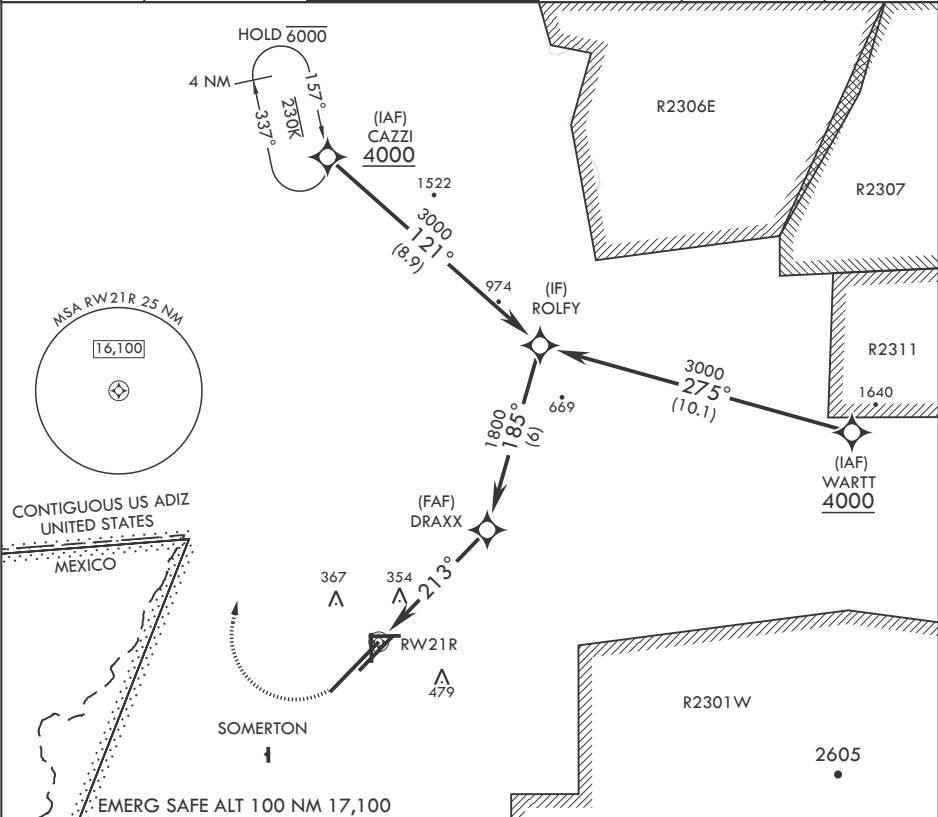
RNP APCH

▼ * When ALS inop, increase CAT AB vis to 1 mile, CAT CD vis to 1 1/4 miles.

MALSR

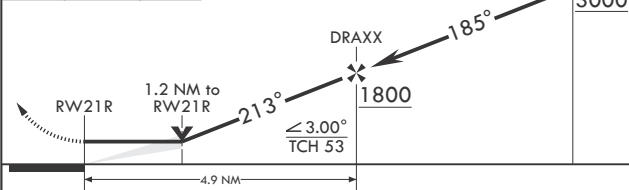
MISSED APPROACH: Climb to 800 then, climbing right turn to 4000 direct CAZZI and hold. Continue climb in hold to 4000.

ATIS	APP CON	TOWER	GND CON	CLNC DEL	ASR/PAR
118.8 273.5	124.7 371.975	119.3 (CTAF) 377.075	121.9 314.0	118.0 336.4	ASR/PAR

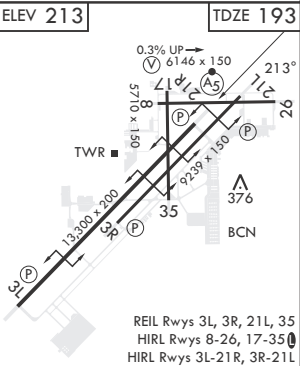


800 4000 CAZZI

crs 213°



CATEGORY	A	B	C	D
LNAV MDA*	620-1/2 427 (500-1/2)	620-3/4 427 (500-3/4)	800-1 587 (600-1/2)	800-2 587 (600-2)
CIRCLING	680-1 467 (500-1)	700-1 487 (500-1)	800-1 587 (600-1/2)	800-2 587 (600-2)



YUMA, ARIZONA

32°39'N - 114°36'W

YUMA MCAS YUMA INTL (KNYL)

Amdt 5 22APR21

RNAV (GPS) RWY 21R

SW-4, 10 JUL 2025 to 07 AUG 2025

SW-4, 10 JUL 2025 to 07 AUG 2025