

APCH CRS	Rwy Idg	5710
170°	TDZE	197
	Arprt Elev	213

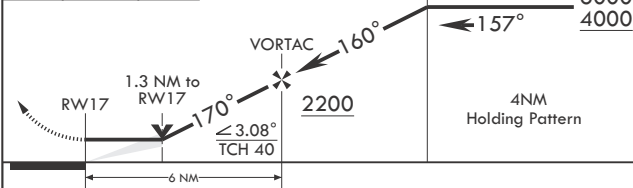
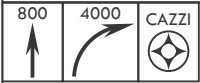
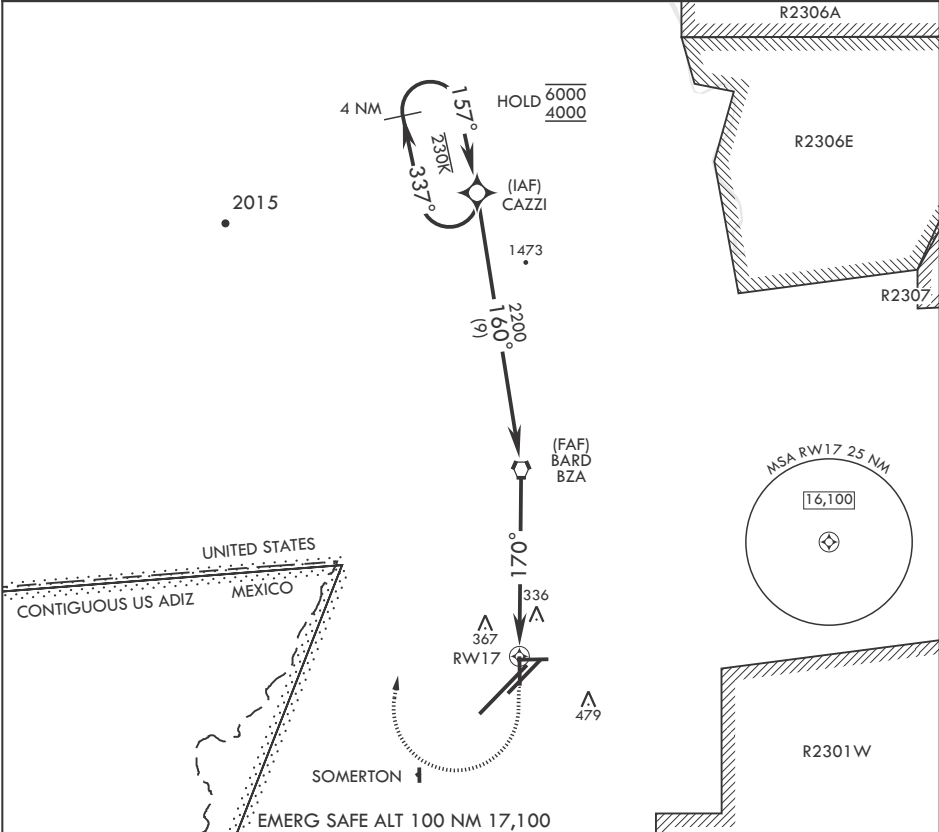
- (USN)

YUMA MCAS YUMA INTL (KNYL)

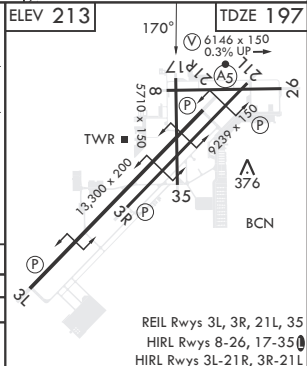
RNP APCH

MISSED APPROACH: Climb to 800 then, climbing right turn to 4000 direct CAZZI and hold. Continue climb in hold to 4000.

ATIS 118.8 273.5	APP CON 124.7 371.975	TOWER 119.3 (CTAF) 0 377.075	GND CON 121.9 314.0	CLNC DEL 118.0 336.4	ASR/PAR
---------------------	--------------------------	---------------------------------	------------------------	-------------------------	---------



CATEGORY	A	B	C	D
LNAV MDA	640-1 443 (500-1)	700-1 487 (500-1)	800-1½ 587 (600-1½)	800-2 587 (600-2)
CIRCLING	680-1 467 (500-1)	700-1 487 (500-1)	800-1½ 587 (600-1½)	800-2 587 (600-2)



SW-4, 10 JUL 2025 to 07 AUG 2025

SW-4, 10 JUL 2025 to 07 AUG 2025