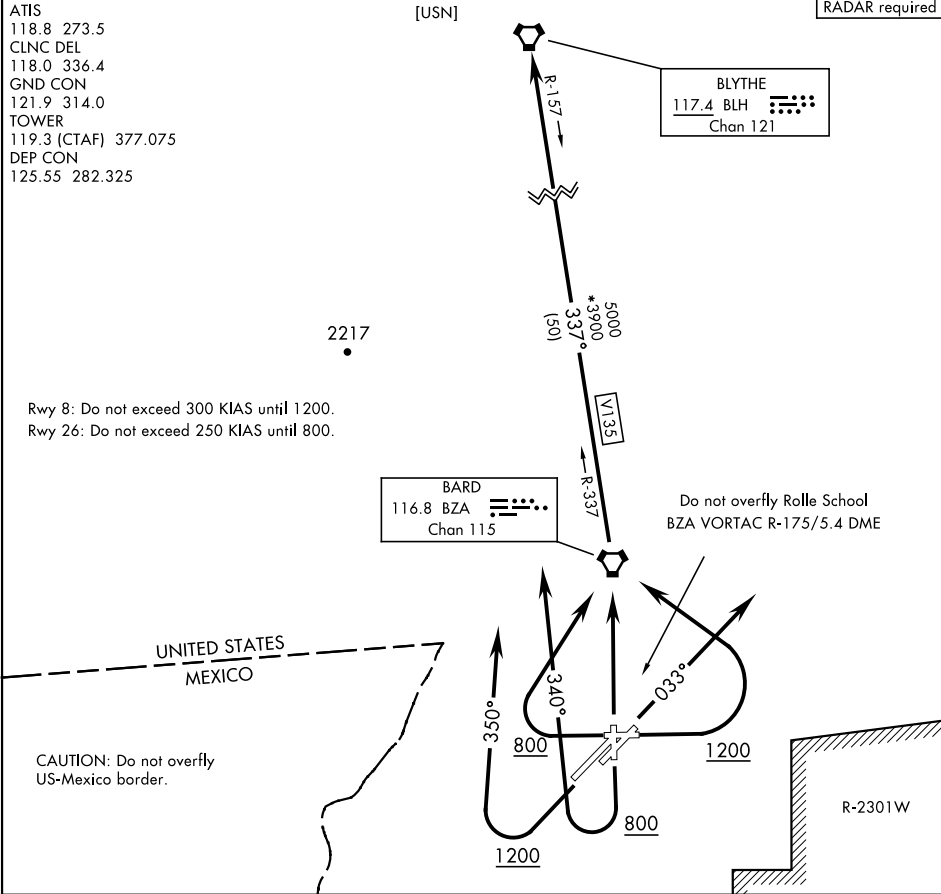


YUMA, ARIZONA

RADAR required

ATIS
118.8 273.5
CLNC DEL
118.0 336.4
GND CON
121.9 314.0
TOWER
119.3 (CTAF) 377.075
DEP CON
125.55 282.325

[USN]



DEPARTURE ROUTE DESCRIPTION

TAKEOFF RWY 3L/R: Climb on hdg 033°, then radar vectors to intercept BZA VORTAC R-337. Thence...

TAKEOFF RWY 8: Climb to 1200, then climbing left turn direct BZA VORTAC. Do not exceed 300 KIAS until 1200. Thence...

TAKEOFF RWY 17: Climb to 800, then climbing right turn hdg 340° to intercept BZA VORTAC R-337. Thence...

TAKEOFF RWY 21L/R: Climb to 1200, then climbing right turn hdg 350° to intercept BZA VORTAC R-337. Thence...

TAKEOFF RWY 26: Climb to 800, then climbing right turn direct BZA VORTAC. Do not exceed 250 KIAS until 800. Thence...

TAKEOFF RWY 35: Climb direct BZA VORTAC, thence...

...via BZA R-337 and BLH VORTAC R-157 to BLH, then via assigned route. Maintain assigned altitude. Expect clearance to filed altitude/flight level 10 minutes after departure.