

ILS or LOC/DME RWY 21R

LOC I-YUM 108.3	APCH CRS 213°	Rwy Idg	21L 9239	21R 13,300
		TDZE	21L 208	21R 193
		Arpt Elev	213	

[USN] YUMA MCAS/YUMA INTL (KNYL)

VOR required

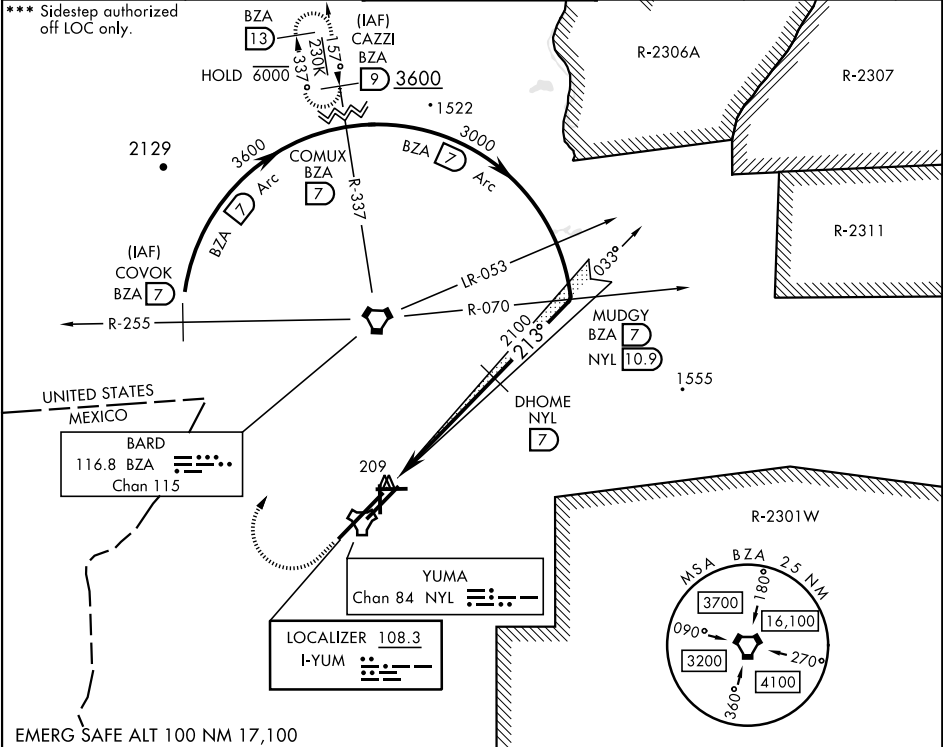


MISSED APPROACH: Climb to 900, then climbing right turn to 3600 direct BZA VORTAC and BZA R-337 to CAZZI and hold.

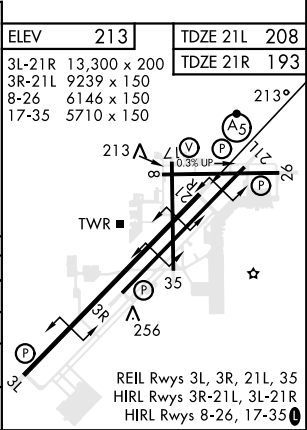
* When ALS inop, increase vis to ¾ mile.
** When ALS inop, increase CAT AB vis to 1 mile, CAT CD vis to 1½ miles.

ATIS 118.8 273.5	APP CON 124.7 371.975	TOWER 119.3 (CTAF) 0 377.075	GND CON 121.9 314.0	CLNC DEL 118.0 336.4	ASR/ PAR
----------------------------	---------------------------------	--	-------------------------------	--------------------------------	-------------

*** Sidestep authorized off LOC only.



900	3600	BZA				
VASI and ILS not coincident.						



ILS or LOC/DME RWY 21R

SW-4, 10 JUL 2025 to 07 AUG 2025

SW-4, 10 JUL 2025 to 07 AUG 2025