

TACAN NYL Chan 84	APCH CRS 208°	Rwy Idg 13,300 TDZE 193 Arpt Elev 213
----------------------	------------------	---

YUMA MCAS/YUMA INTL (KNYL)

* When ALS inop, increase vis to 1 3/8 miles.



MISSED APPROACH: Climbing right turn to 4000 intercept NYL TACAN R-342 to JIMUK and hold, continue climb-in-hold to 4000.

ATIS
118.8 273.5

APP CON
124.7 371.975

TOWER
119.3 (CTAF) **L** 377.075

GND CON
121.9 314.0


CLNC DEL
118.0 336.4

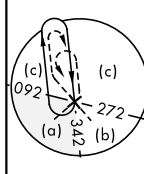
ASR/
PAR

Request holding from Los Angeles
ARTCC prior to frequency change
to MCAS Yuma Approach Control.

CAUTION:
Short intermediate, recommend
early configuration.

CAUTION:
R-2507 and R-2512 located
approximately 33 NM/28 NM NW
respectively of NYL TACAN.

BLYTHE
117.4 BLH 
Chan 121

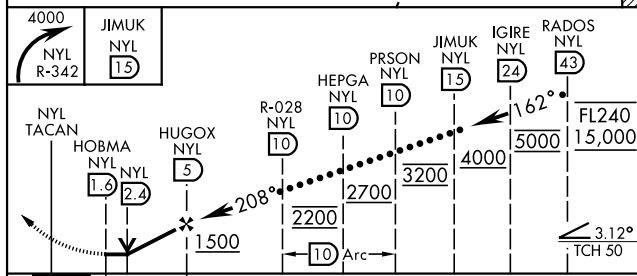




3701

YUMA
Chan 84 NYL 

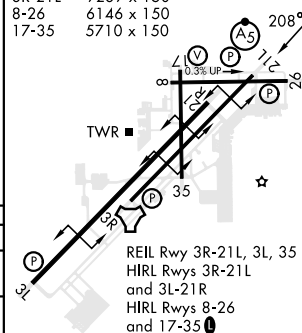
UNITED STATES
MEXICO

EMERG SAFE ALT 100 NM 17,100



			
CATEGORY	C	D	E
S-21R *	640-7 $\frac{1}{8}$	447	(500-7 $\frac{1}{8}$)
 CIRCLING	800-1 $\frac{1}{2}$ 587 (600-1 $\frac{1}{2}$)	800-2 587 (600-2)	

ELEV	213	TDZE	193
3L-21R	13,300 x 200		
3R-21L	9239 x 150		
8-26	6146 x 150		
17-35	5710 x 150		



YUMA, ARIZONA
Amdt 6 22APR21

32°39'N-114°36'W

YUMA MCAS/YUMA INTL (KNYL)

HI-TACAN Z RWY 21R

SW-4, 10 JUL 2025 to 07 AUG 2025