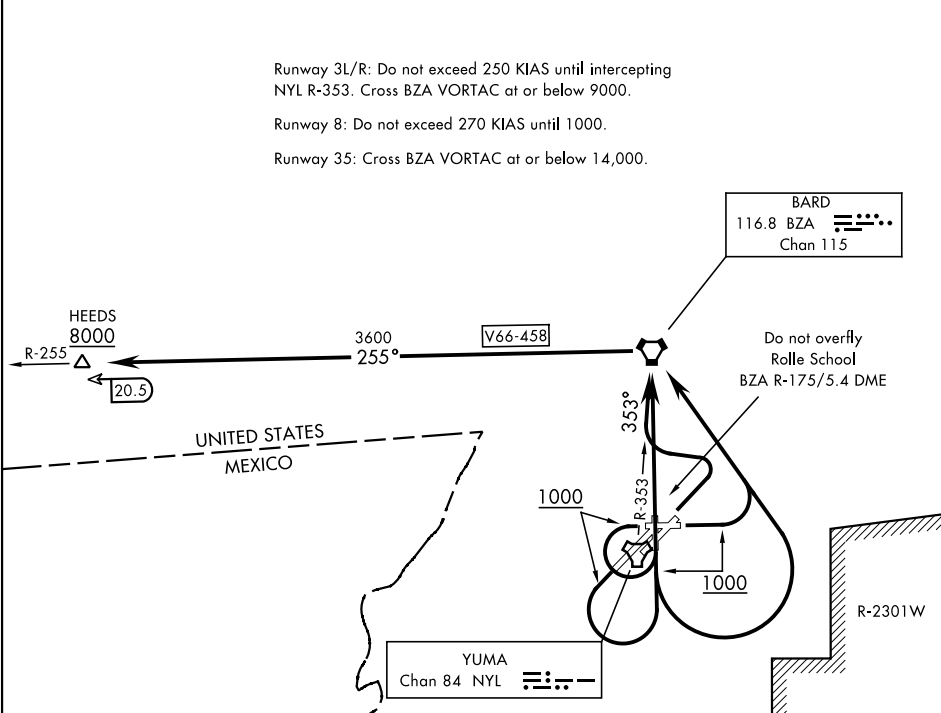


ATIS 118.8 273.5 CLNC DEL 118.0 336.4 GND CON 121.9 314.0 TOWER 119.3 (CTAF) 377.075 DEP CON 125.55 282.325	2136 A 2663	[USN]		YUMA, ARIZONA						
		Rwy	Knots	60	120	180	240	300	360	
		†3L/R	V/V(fpm)	313	626	939	1252	1565	1878	
		†8, 17, 21L/R, 26	V/V(fpm)	291	582	873	1164	1455	1746	
		†35	V/V(fpm)	328	656	984	1312	1640	1968	
		*3R	V/V(fpm)	205	410	615	820	1025	1230	



DEPARTURE ROUTE DESCRIPTION

TAKEOFF RWY 3L/R: Climbing left turn to 8000 to intercept NYL TACAN R-353 to BZA VORTAC and via BZA R-255 to HEEDS. Do not exceed 250 KIAS until intercepting NYL R-353. Cross BZA VORTAC at or below 9000. Cross HEEDS at or above 8000.

TAKEOFF RWY 8: Climb to 1000, then climbing left turn direct BZA VORTAC, then via BZA R-255 to HEEDS. Do not exceed 270 KIAS until 1000. Cross HEEDS at or above 8000.

TAKEOFF RWY 17, 21L/R, 26: Climb to 1000, then climbing left turn direct BZA VORTAC, then via BZA R-255 to HEEDS. Cross HEEDS at or above 8000.

TAKEOFF RWY 35: Climb to 8000 direct BZA VORTAC and via BZA R-255 to HEEDS. Cross BZA VORTAC at or below 14,000. Cross HEEDS at or above 8000.

Then via assigned route. Maintain assigned altitude. Expect clearance to filed altitude 10 minutes after departure.