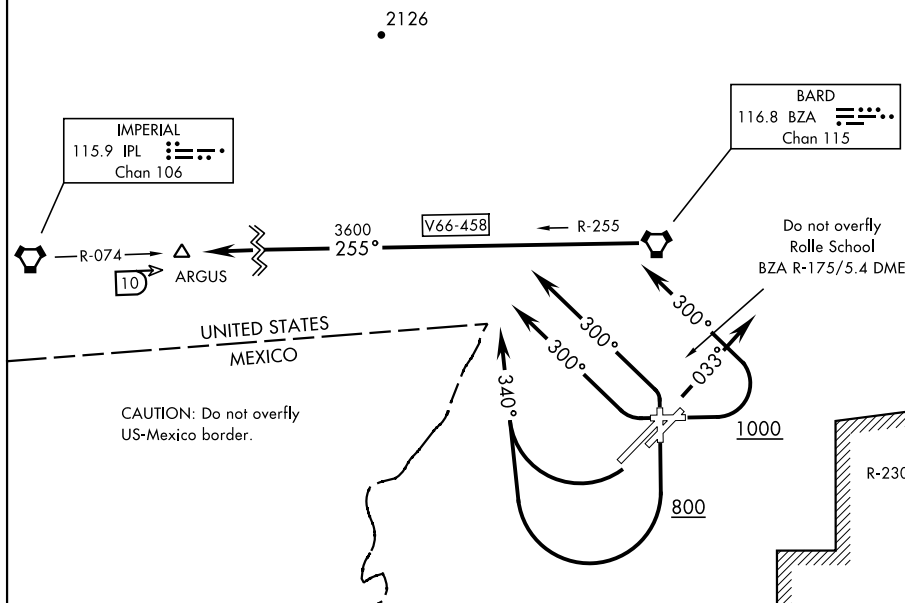


ATIS	
118.8	273.5
CLNC DEL	
118.0	336.4
GND CON	
121.9	314.0
TOWER	
119.3 (CTAF)	377.075
DEP CON	
125.55	282.325

[USN]



DEPARTURE ROUTE DESCRIPTION

TAKEOFF RWY 3L/R: Climb heading 033°, then RADAR vectors to intercept BZA VORTAC R-255. Thence...

TAKEOFF RWY 8: Climb heading 078° to 1000, then climbing left turn heading 300°, then RADAR vectors to intercept BZA VORTAC R-255. Thence...

TAKEOFF RWY 17: Climb heading 168° to 800, then climbing right turn heading 340°, then RADAR vectors to intercept BZA VORTAC R-255. Thence...

TAKEOFF RWY 21L/R: Climbing right turn heading 340°, then RADAR vectors to intercept BZA VORTAC R-255. Thence...

TAKEOFF RWY 26: Climbing right turn heading 300°, then RADAR vectors to intercept BZA VORTAC R-255. Thence...

TAKEOFF RWY 35: Climbing left turn heading 300°, then RADAR vectors to intercept BZA VORTAC R-255. Thence...

...via BZA R-255 to ARGUS, then via assigned route. Maintain assigned altitude. Expect clearance to filed altitude/flight level 10 minutes after departure.