

WAAS CH <b>78119</b> <b>W04A</b>	APP CRS <b>045°</b>	Rwy Idg TDZE <b>1137</b> Apt Elev <b>1148</b>
--	------------------------	---

RNAV (GPS) RWY 4

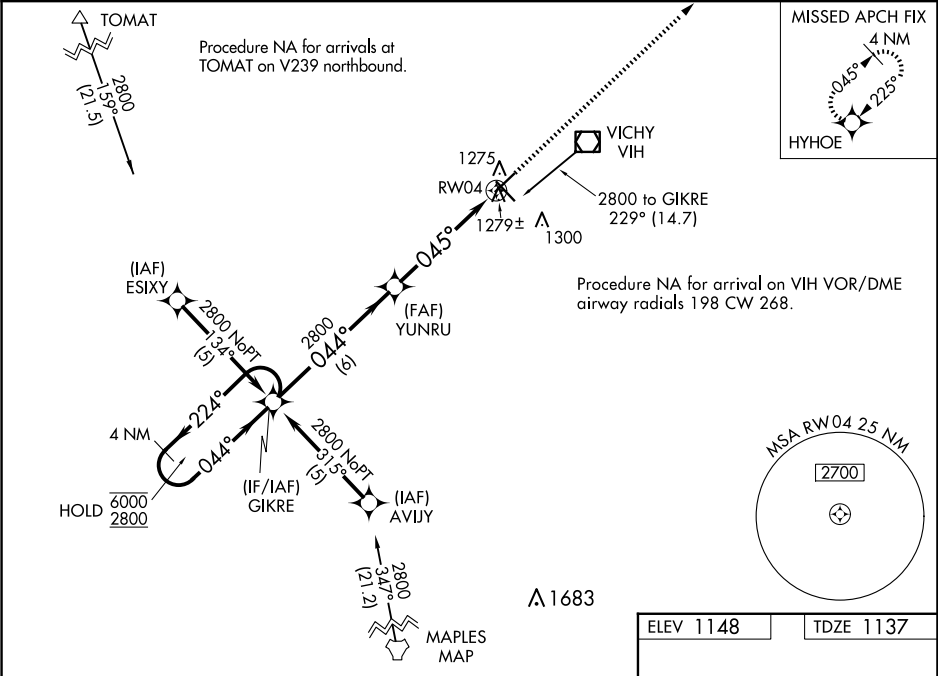
ROLLA NTL (VIH)

RNP APCH-GPS.

Rwy 4 helicopter visibility reduction below  $\frac{3}{4}$  SM NA.  
For uncompensated Baro-VNAV systems, LNAV/VNAV  
NA below -17°C or above 54°C.

MISSED APPROACH: Climb to 3000 direct HYHOE  
and hold.

ASOS <b>119.025</b>	KANSAS CITY CENTER <b>128.35 284.675</b>	UNICOM <b>123.0 (CTAF) 0</b>
------------------------	---	---------------------------------



4 NM Holding Pattern		GIKRE		YUNRU		3000 ↑		HYHOE ✦	
6000 ← 224°		2800 → 044°		2800		1.1 NM to RW04		RW04	
GP 3.00°		TCH 40		2800		045°		2800	
		6 NM		3.9 NM		1.1 NM			
CATEGORY	A	B	C	D					
LPV DA	1387-1 250 (300-1)								
LNAV/VNAV DA	1549-1½ 412 (500-1½)								
LNAV MDA	1540-1	403 (400-1)	1540-1½	403 (400-1½)					
CIRCLING	1580-1 432 (500-1)	1600-1 452 (500-1)	1600-1½ 452 (500-1½)	1740-2 592 (600-2)					