

WAAS CH <b>97624</b> <b>W13A</b>	APP CRS <b>132°</b>	Rwy Idg TDZE Apt Elev	<b>5005</b> <b>264</b> <b>264</b>
--	------------------------	-----------------------------	---

RNAV (GPS) RWY 13

MOTON FLD MUNI (Ø6A)

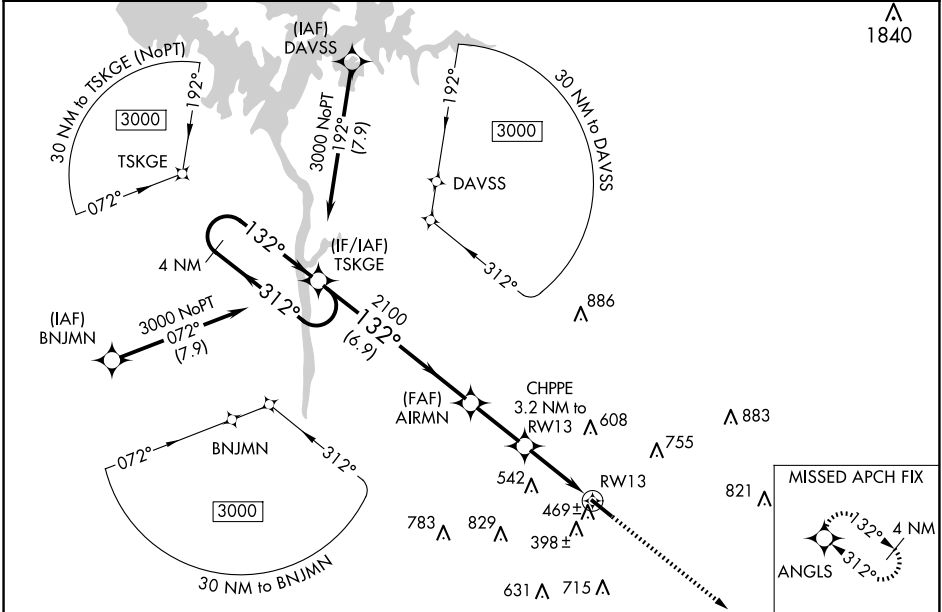
▼

NA

Baro-VNAV NA. DME/DME RNP-0.3 NA. Use Montgomery altimeter setting; when not received, use Troy Muni at N Kenneth Campbell Fld altimeter setting and increase all DA 18 feet and all MDA 20 feet; increase Circling Cats B and C visibility ¼ mile. Helicopter visibility reduction below ¾ SM NA.

MISSED APPROACH: Climb to 3000 direct ANGLES and hold.

ATLANTA APP CON★ <b>125.5 323.1</b>	UNICOM <b>122.8 (CTAF) Ø</b>
--	---------------------------------



				ELEV 264		TDZE 264	
<div><div>4 NM Holding Pattern</div><div>3000 ← 312° 132° →</div><div>GP 3.00° TCH 40</div><div>TSKGE</div><div>VGSI and RNAV glidepath not coincident (VGSI Angle 3.00/TCH 30).</div><div>AIRMN 2100</div><div>CHPPE 3.2 NM to RW13</div><div>RW13</div><div>3000</div><div>↑</div><div>ANGLS</div><div>*LNNAV only</div><div>132°</div><div>500.5 x 100</div><div>132°</div><div>31</div></div>							
CATEGORY		A		B		C	
LPV DA		661-1 <sup>3</sup> / <sub>8</sub>		397 (400-1 <sup>3</sup> / <sub>8</sub> )			
LNNAV/VNAV DA		798-1 <sup>7</sup> / <sub>8</sub>		534 (600-1 <sup>7</sup> / <sub>8</sub> )			
LNNAV MDA		820-1 556 (600-1)		820-2 <sup>5</sup> / <sub>8</sub> 556 (600-2 <sup>5</sup> / <sub>8</sub> )			
CIRCLING		960-1 696 (700-1) 1060-1 796 (800-1)		1200-2 <sup>3</sup> / <sub>4</sub> 936 (1000-2 <sup>3</sup> / <sub>4</sub> ) 1260-3 996 (1000-3)		MIRL Rwy 13-31	