

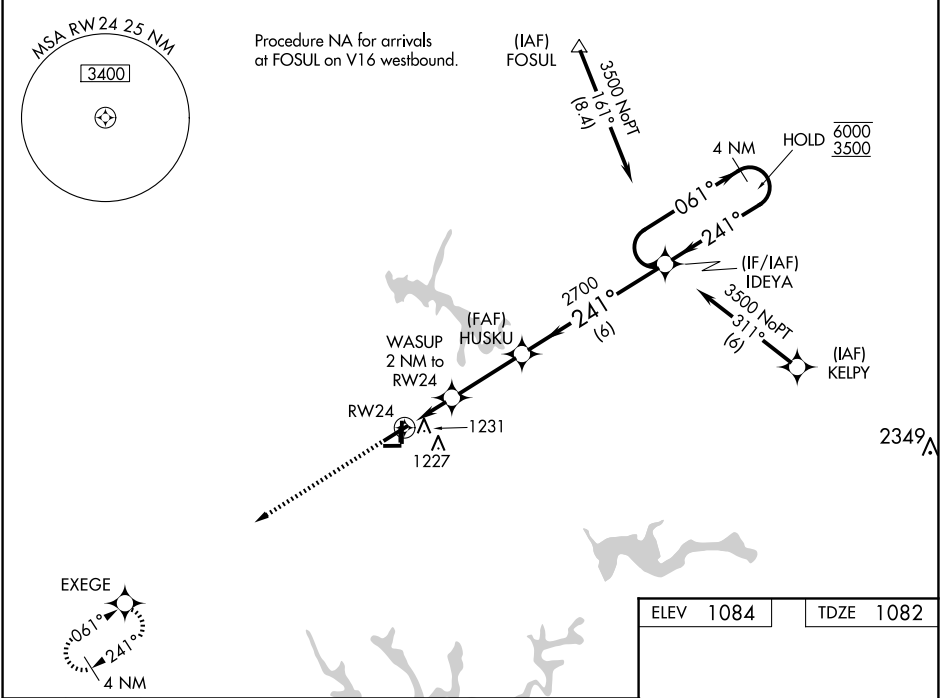
WAAS CH 53324 W24A	APP CRS 241°	Rwy Idg TDZE Apt Elev	5001 1082 1084
--	------------------------	-----------------------------	---

RNAV (GPS) RWY 24

TULLAHOMA RGNL/WM NORTHERN FLD (THA)

RNP APCH - GPS.		MISSED APPROACH: Climb to 3000 direct EXEGE and hold.
<div><div><div>▼</div><div>▲</div></div></div>	<div>Circling NA to Rwys 9 and 27. Circling Rwy 18 and 36 NA at night. Rwy 24 helicopter visibility reduction below $\frac{3}{4}$ SM NA. For uncompensated Baro-VNAV systems, LNAV/VNAV NA below -17°C or above 37°C.</div>	

AWOS-3 128.325	MEMPHIS CENTER 128.15 323.125	UNICOM 123.0 (CTAF) 0
--------------------------	---	---------------------------------



3000 EXEGE		VGSI and RNAV glidepath not coincident (VGSI Angle 3.00/TCH 33).		4 NM Holding Pattern	
1.2 NM to RW24		WASUP 2 NM to RW24	HUSKU	IDEYA	
1.2 NM		0.9 NM	2.9 NM	6 NM	
1760		2700	2700	6000	3500
GP 3.00°		TCH 45			
CATEGORY	A	B	C	D	
LPV DA		1332-1	250 (300-1)		
LNAV/VNAV DA		1400-1	318 (400-1)		
LNAV MDA	1500-1	418 (500-1)	1500-1½	418 (500-1½)	
CIRCLING	1540-1 456 (500-1)	1580-1 496 (500-1)	1620-1½ 536 (600-1½)	1640-2 556 (600-2)	

