

APP CRS
183°

Rwy Idg
TDZE
Apt Elev

4205
1082
1084

RNAV (GPS) RWY 18

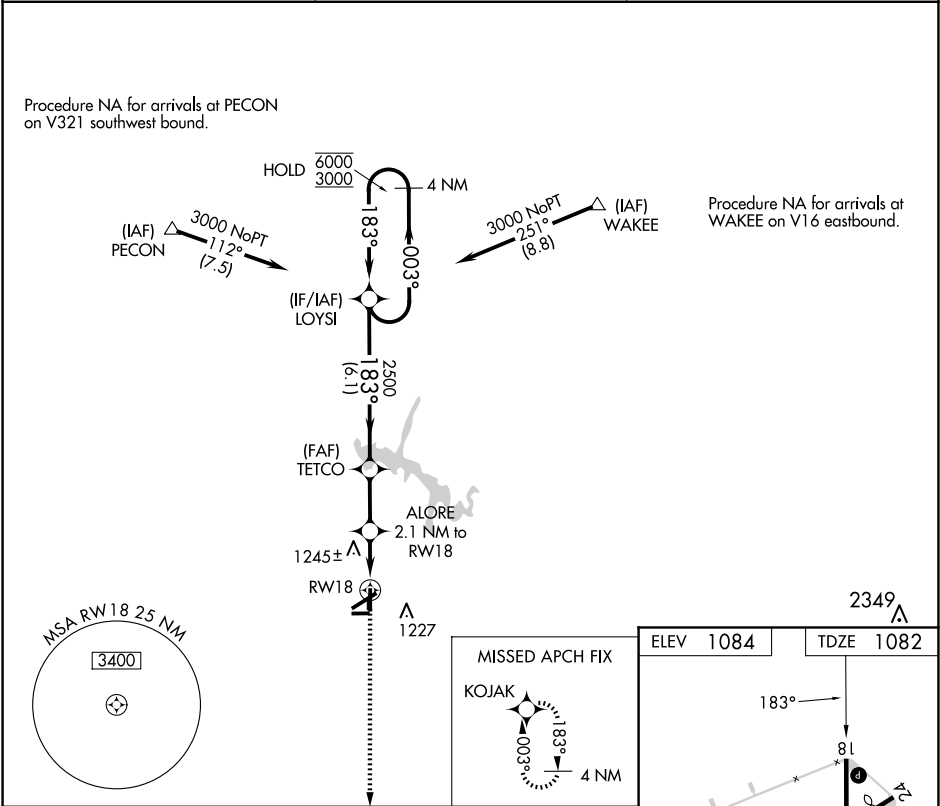
TULLAHOMA RGNL/WM NORTHERN FLD (THA)

RNP APCH - GPS.

Rwy 18 helicopter visibility reduction below 1 SM NA. Circling NA to Rwy 9 and 27. Straight-in Rwy 18 NA at night, Circling Rwy 18, 36 NA at night.

MISSED APPROACH:
Climb to 3400 direct KOJAK and hold.

AWOS-3 128.325	MEMPHIS CENTER 128.15 323.125	UNICOM 123.0 (CTAF)
--------------------------	---	-------------------------------



4 NM Holding Pattern

VGSI and descent angle not coincident (VGSI Angle 2.95/TCH 34).

3400 KOJAK

LOYSI

TETCO

ALORE 2.1 NM to RWY18

RWY18

6000 3000

003° 183°

183°

2500

1780

6.1 NM 2.2 NM 2.1 NM

CATEGORY	A	B	C	D
LNNAV MDA	1500-1	418 (500-1)	1500-1½	418 (500-1½)
CIRCLING	1540-1 456 (500-1)	1580-1 496 (500-1)	1620-1½ 536 (600-1½)	1640-2 556 (600-2)

MIRL Rwy 6-24 and 18-36

REIL Rwy 6, 18, 24 and 36