

WAAS CH <b>90337</b> <b>W34A</b>	APP CRS <b>343°</b>	Rwy Idg TDZE <b>8203</b> Apt Elev <b>7289</b>
--	------------------------	---

RNAV (GPS) RWY 34

KEMMERER MUNI (EMM)

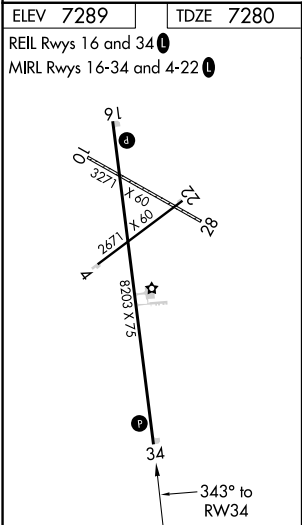
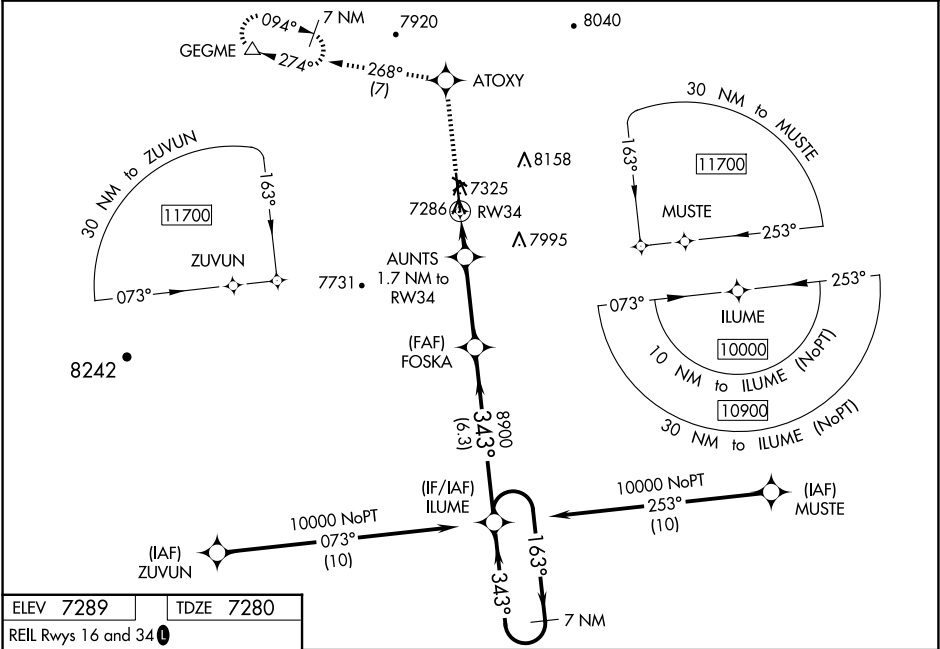
▼

▲

Baro-VNAV and VDP NA when using Evanston altimeter setting.  
For uncompensated Baro-VNAV systems, LNAV/VNAV NA below -27°C (-16°F) or above 54°C (130°F). DME/DME RNP-0.3 NA.  
Night landing: Rwy 4, 10, 22, 28 NA. When local altimeter setting not received, use Evanston altimeter setting: increase all DA 111 feet and visibilities 1/8 mile; increase all MDA 120 feet.

MISSED APPROACH: Climb to 12000 direct ATOXY and on track 268° direct GEGME and hold, continue climb-in-hold to 12000.

AWOS-3PT <b>119.675</b>	SALT LAKE CITY CENTER <b>124.35 353.5</b>	UNICOM <b>122.8 (CTAF) 0 *</b>
----------------------------	--	-----------------------------------



12000	ATOXY	fr 268°	GEGME	VGSI and RNAV glidepath not coincident (VGSI Angle 3.25/TCH 61).	7 NM Holding Pattern
*LNAV only.	AUNTS 1.7 NM to RW34	FOSKA	ILUME	GP 3.00° TCH 60	
	*0.6 NM to RW34	8900	8900		
	0.6 1.1 NM	3.3 NM	6.3 NM		
CATEGORY	A	B	C	D	
LPV DA	7530-1	250 (300-1)	NA	NA	
LNAV/VNAV DA	7530-1	250 (300-1)	NA	NA	
LNAV MDA	7540-1	260 (300-1)	NA	NA	
CIRCLING	7660-1 371 (400-1)	8240-1 951 (1000-1 1/2)	NA	NA	