

WAAS CH 69523 W30A	APP CRS 298°	Rwy Idg TDZE Apt Elev	4400 3290 3298
--	------------------------	-----------------------------	---

RNAV (GPS) RWY 30

CHADRON MUNI (CDR)

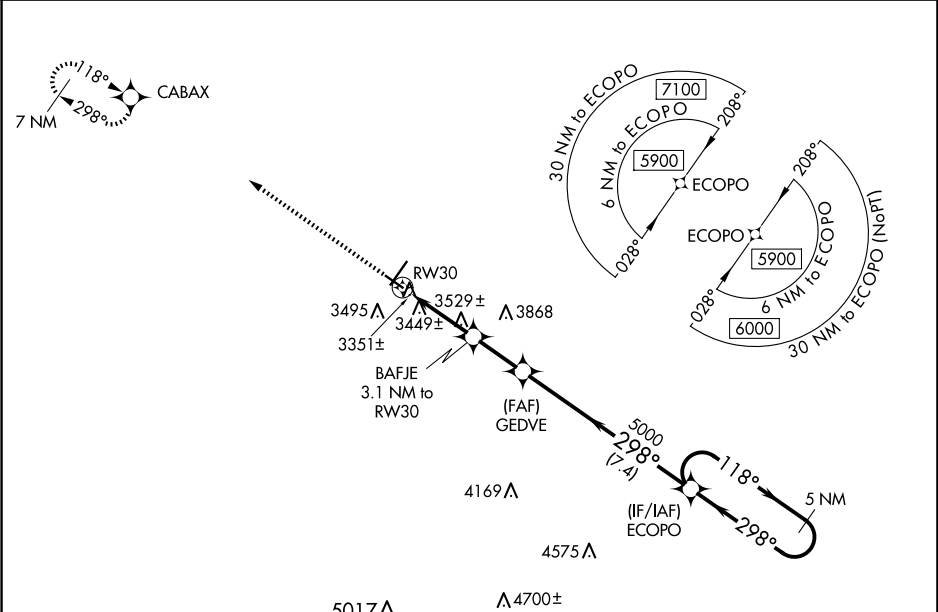
⚠

⚠

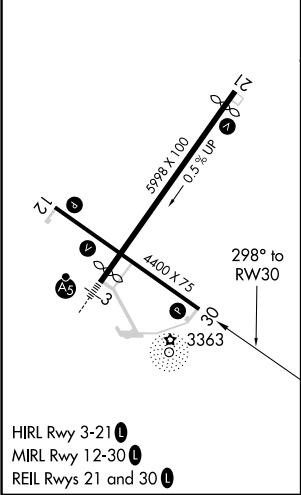
For uncompensated Baro-VNAV systems, LNAV/VNAV NA below -21°C (-5°F) or above 54°C (130°F). DME/DME RNP-0.3 NA. When local altimeter setting not received, use Pine Ridge altimeter setting and increase all DA 70 feet and all MDA 80 feet; increase LPV all Cts visibility 1⁄8 mile, LNAV/VNAV all Cts visibility 1⁄4 mile, and LNAV and Circling Cat C visibility 1⁄4 mile. Baro-VNAV and VDP NA with Pine Ridge altimeter setting.


MISSED APPROACH:
Climb to 6300 direct CABAX and hold.

ASOS 118.05	DENVER CENTER 127.95 338.2	UNICOM 122.8 (CTAF) 📶
-----------------------	--------------------------------------	--



ELEV 3298	D	TDZE 3290
-----------	----------	-----------



6300 ↑		CABAX 		5 NM Holding Pattern	
*LNAV only		BAFJE 3.1 NM to RW30		GEDVE 5000	

NC-2, 10 JUL 2025 to 07 AUG 2025

NC-2, 10 JUL 2025 to 07 AUG 2025