

WAAS CH 90523 W21A	APP CRS 208°	Rwy Idg TDZE Apt Elev	5500 3286 3298
--	------------------------	-----------------------------	---

RNAV (GPS) RWY 21

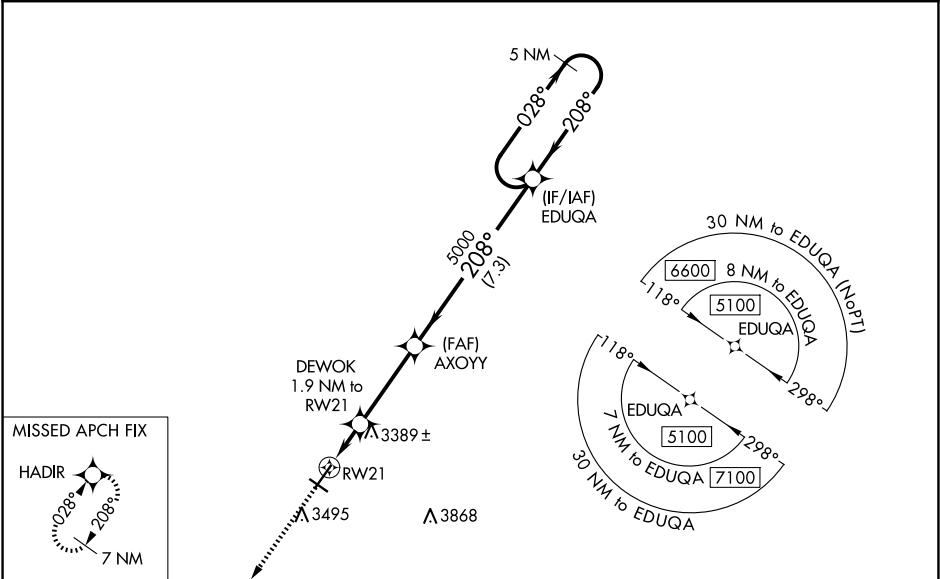
CHADRON MUNI (CDR)

RNP APCH-GPS

Baro-VNAV NA when using Pine Ridge altimeter setting. For uncompensated Baro-VNAV systems, LNAV/VNAV NA below -21°C or above 54°C. VDP NA with Pine Ridge altimeter setting. When local altimeter setting not received, use Pine Ridge altimeter setting and increase LPV DA to 3606 feet, LNAV/VNAV DA to 3754 feet and all MDA 80 feet; increase LNAV/VNAV visibility ¼ SM all Cats, LNAV Cats C and D visibility ¼ SM, and Circling Cat C visibility ¼ SM.

MISSED APPROACH: Climb to 7500 direct HADIR and hold, continue climb-in-hold to 7500.

ASOS 118.05	DENVER CENTER 127.95 338.2	UNICOM 122.8 (CTAF) 1
-----------------------	--------------------------------------	--



ELEV 3298	D	TDZE 3286
------------------	----------	------------------

7500

HADIR

*LNAV only

DEWOK 1.9 NM to RWY 21

*1 NM to RWY 21

RWY 21

AXOYY

5000

3900*

5000

EDUQA

5 NM Holding Pattern

028° → 5100

← 208°

GP 3.00°

TCH 41

1 NM

0.9 NM

3.4 NM

7.3 NM

208° to RWY 21

5998 X 100

0.5% UP

4400 X 75

3363

HIRL Rwy 3-21 **1**

MIRL Rwy 12-30 **1**

REIL Rws 21 and 30 **1**

CATEGORY	A	B	C	D
LPV DA	3536-1 250 (300-1)			
LNAV/VNAV DA	3684-1½ 398 (400-1½)			
LNAV MDA	3640-1 354 (400-1)			
CIRCLING	3820-1 522 (600-1)	3920-1 622 (700-1)	3920-1¼ 622 (700-1¼)	4220-3 922 (1000-3)