

WAAS CH 56523 W12A	APP CRS 118°	Rwy Idg TDZE Apt Elev	4400 3294 3298
--	------------------------	-----------------------------	---

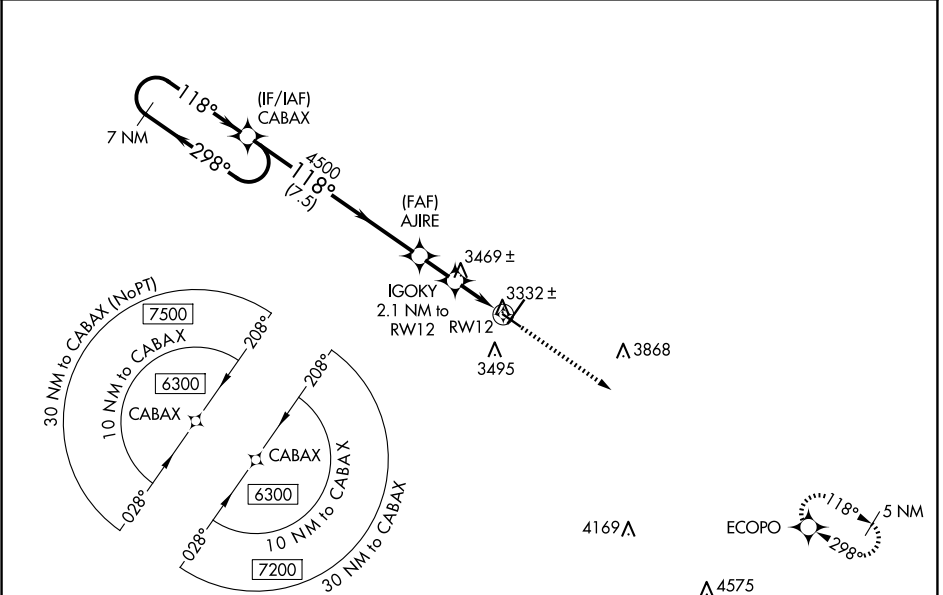
RNAV (GPS) RWY 12

CHADRON MUNI (CDR)

Baro-VNAV NA when using Pine Ridge altimeter setting. For uncompensated Baro-VNAV systems, LNAV/VNAV NA below -21°C (-5°F) or above 54°C (130°F). DME/DME RNP-0.3 NA. When local altimeter setting not received, use Pine Ridge altimeter setting and increase all DA 70 feet and all MDA 80 feet; increase LPV all Cats visibility ½ mile, LNAV/VNAV all Cats visibility ¼ mile, and Circling Cat C visibility ¼ mile.

MISSED APPROACH:
Climb to 5900 direct
ECOPO and hold.

ASOS 118.05	DENVER CENTER 127.95 338.2	UNICOM 122.8 (CTAF) 0
-----------------------	--------------------------------------	---------------------------------



5017

4700±

7 NM Holding Pattern

VGSI and RNAV glidepath not coincident (VGSI Angle 3.00/TCH 29).

6300

298°

118°

118°

4500

4000

4500

5900

ECOPO

*RNAV only

GP 3.00° TCH 42

7.5 NM

1.6 NM

2.1 NM

CATEGORY	A	B	C	D
LPV DA	3544-1	250 (300-1)		NA
LNAV/VNAV DA	3719-1½	425 (500-1½)		NA
LNAV MDA	3720-1	426 (500-1)	3720-1¼ 426 (500-1¼)	NA
CIRCLING	3820-1 522 (600-1)	3920-1 622 (700-1)	3920-1¾ 622 (700-1¾)	NA

118° to RW12

5900 X 100

0.5° UP

4400 X 75

3363

HIRL Rwy 3-21 0

MIRL Rwy 12-30 0

REIL Rwy 21 and 30 0