

VOR/DME JAC	APP CRS	Rwy Ldg	6300
<b>115.4</b>	<b>193°</b>	TDZE	<b>6451</b>
Chan <b>101</b>		Apt Elev	<b>6451</b>

VOR RWY 19

JACKSON HOLE (JAC)

DME required. RADAR required for procedure entry at MOSSS.

▼

⚠

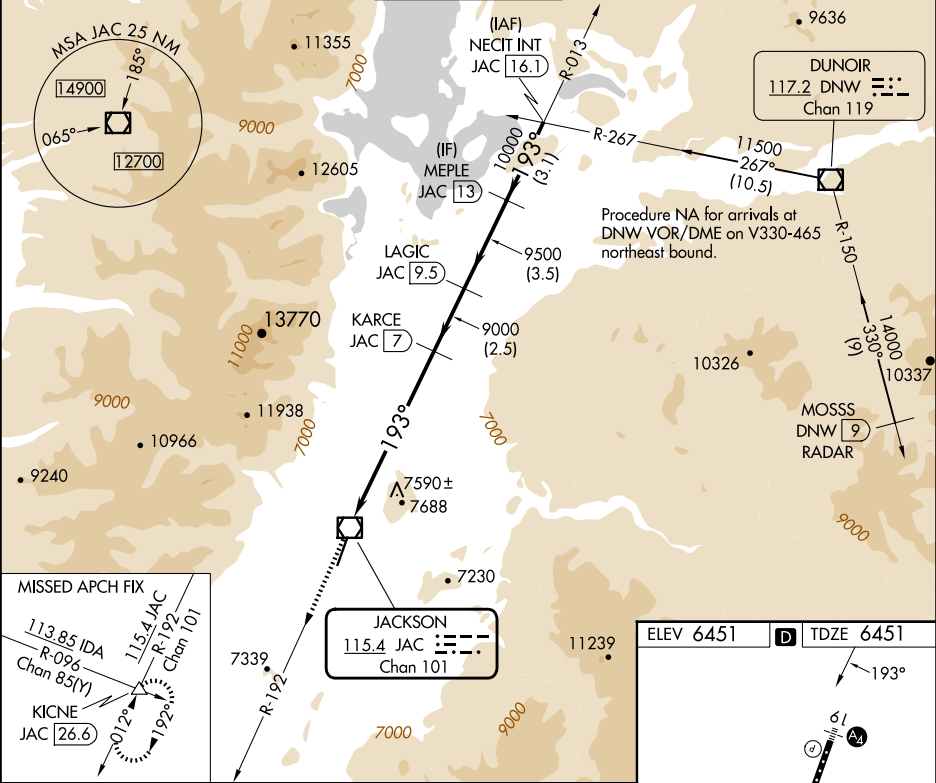
❄

Circling NA east of Rwy 1-19. Rwy 19 helicopter visibility reduction below RVR 4000 NA. Circling NA for Cat D.  
Inop table does not apply to S-19 Cat C/D.

MALS

MISSED APPROACH: Climb to 14000 on JAC VOR/DME R-192 to KICNE INT/26.6 DME and hold, continue climb-in-hold to 14000.

D-ATIS	SALT LAKE CENTER	JACKSON TOWER★	GND CON	UNICOM
<b>120.625</b>	<b>133.25 285.6</b>	<b>118.075 (CTAF)</b>	<b>124.55</b>	<b>122.95</b>



14000	KICNE				
JAC R-192	△				
JAC VOR/DME	JAC 4	KARCE JAC 7	LAGIC JAC 9.5	MEPLE JAC 13	NECIT INT JAC 16.1
	3.20°				
	TCH 50				
	9000	9500	10000	11500	
0.3	4 NM	3.1 NM	2.5 NM	3.5 NM	3.1 NM
CATEGORY	A	B	C	D	
S-19	7900/55 1449 (1500-1)	7900-1¼ 1449 (1500-1¼)	7900-3 1449 (1500-3)		
CIRCLING	7900-1¼ 1449 (1500-1¼)	7900-1½ 1449 (1500-1½)	7900-3 1449 (1500-3)	NA	

