

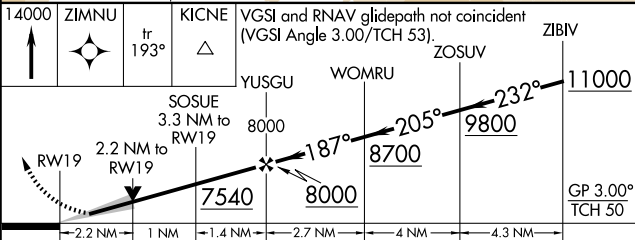
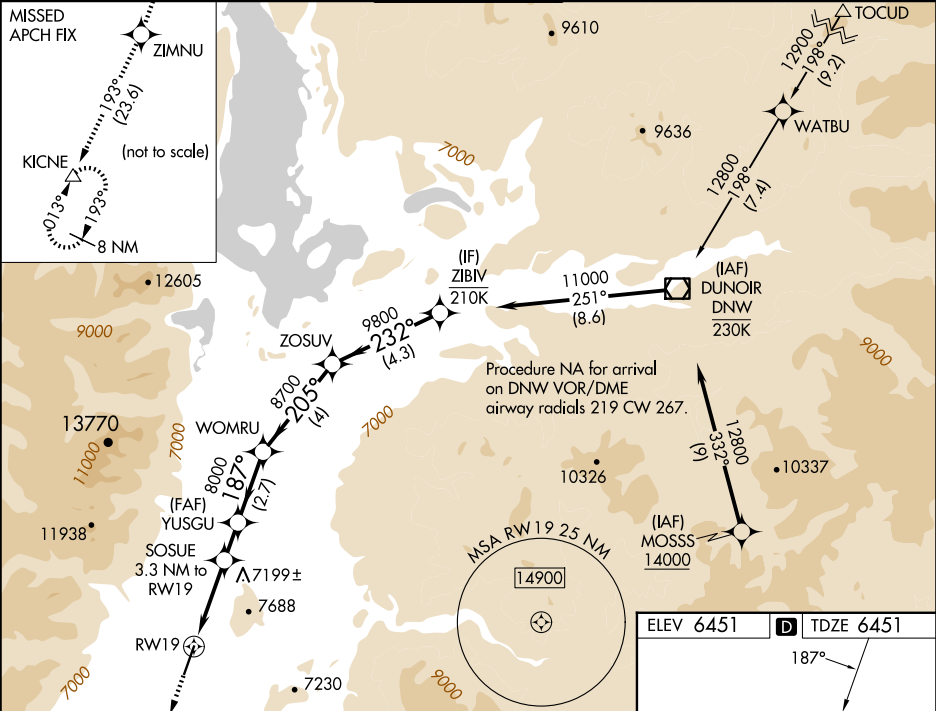
WAAS CH <b>90232</b> <b>W19A</b>	APP CRS <b>187°</b>	Rwy Ldg TDZE Apt Elev <b>6300</b> <b>6451</b> <b>6451</b>
--	------------------------	--

RNAV (GPS) Z RWY 19

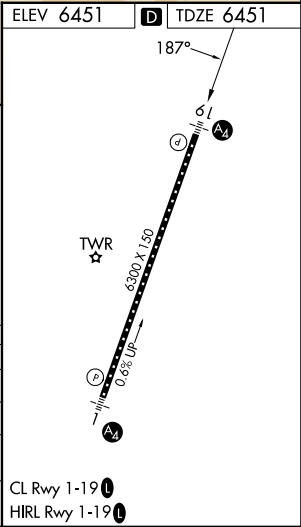
JACKSON HOLE (JAC)

RNP APCH - GPS.	MALS	MISSED APPROACH: Climb to 14000 direct ZIMNU and on track 193° to KICNE and hold, continue climb-in-hold to 14000. *Missed approach requires minimum climb of 230 feet per NM to 9000.
<div><div><div></div><div></div><div></div></div><div><div>Circling NA for Cats A, B, and C east of Rwy 1-19. For inop ALS, increase LNAV Cats C and D visibility to 2 ½ SM. Inop table does not apply to LPV *all Cats.</div></div></div>	<div><div></div><div></div></div>	

D-ATIS <b>120.625</b>	SALT LAKE CENTER <b>133.25 285.6</b>	JACKSON TOWER* <b>118.075 (CTAF)</b>	GND CON <b>124.55</b>	UNICOM <b>122.95</b>
--------------------------	---	---	--------------------------	-------------------------



CATEGORY	A	B	C	D
LPV DA*	6651/40		200 (200-¾)	
LPV DA	6927/60		476 (500-1¼)	
LNAV MDA	7220/40 769 (800-¾)	7220/55 769 (800-1)	7220-2 769 (800-2)	
CIRCLING	7220-1 769 (800-1)	7220-1¼ 769 (800-1¼)	7440-3 989 (1000-3)	NA



NW-1, 10 JUL 2025 to 07 AUG 2025

NW-1, 10 JUL 2025 to 07 AUG 2025