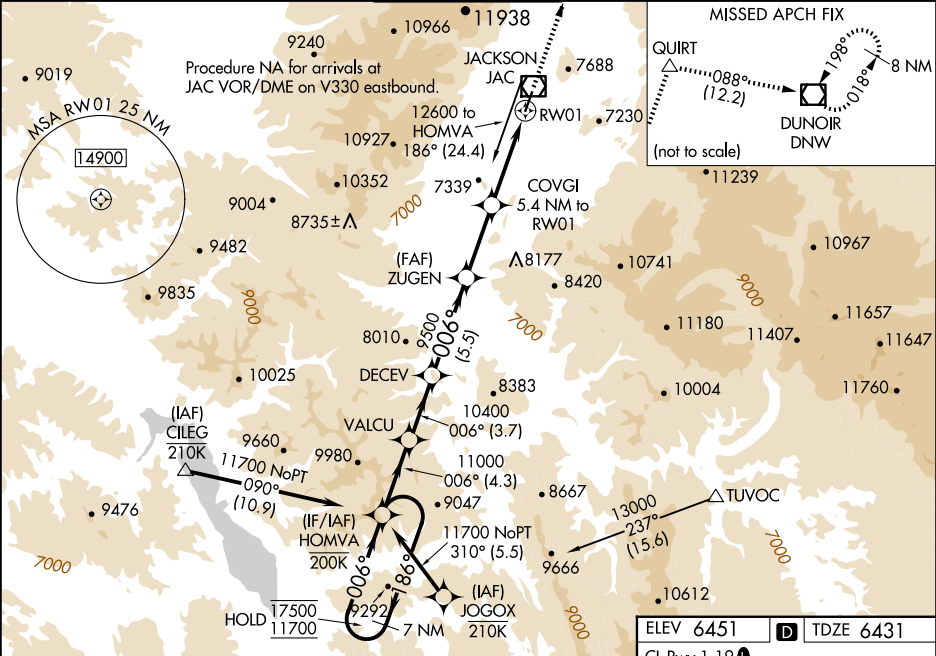


WAAS CH <b>58299</b> <b>W01A</b>	APP CRS <b>006°</b>	Rwy Ldg TDZE <b>6431</b> Apt Elev <b>6451</b>
--	------------------------	---

RNAV (GPS) X RWY 1  
JACKSON HOLE (JAC)

RNP APCH-GPS. ▼ Circling NA east of Rwy 1-19. Baro-VNAV NA. ▲ Circling NA for Cat D. Inop table does not apply to LPV, LPV*, LNAV/VNAV, and LNAV Cat C/D. ☁ -22°C		MALS ≡ A2	MISSED APPROACH: Climb to 14000 direct QUIRT and on track 088° to DNW VOR/DME and hold, continue climb-in-hold to 14000. *Missed approach requires minimum climb of 385 feet per NM to 7700.
--	--	-----------------	---

D-ATIS <b>120.625</b>	SALT LAKE CENTER <b>133.25 285.6</b>	JACKSON TOWER* <b>118.075 (CTAF) 0</b>	GND CON <b>124.55</b>	UNICOM <b>122.95</b>
--------------------------	---	---	--------------------------	-------------------------



HOMVA 7 NM Holding Pattern		VALCU	DECEV	ZUGEN	COVGI	QUIRT	ir 088°	DNW
17500 ← 186° 11700 → 006°		11000	10400	9500	8180	9500		
GP 3.00° TCH 50								
← 4.3 NM		← 3.7 NM	← 5.5 NM	← 4.1 NM	← 2.1 NM	← 3.4		
CATEGORY	A	B	C	D				
LPV DA*	6651/40		220 (200-¾)					
LPV DA	7445-4		1014 (1000-4)					
LNAV/VNAV DA	7327-4		896 (900-4)					
LNAV MDA	7540/55 1109 (1100-1)	7540-1¼ 1109 (1100-1¼)	7540-3 1109 (1100-3)					
☐ CIRCLING	7540-1¼ 1089 (1100-1¼)	7540-1½ 1089 (1100-1½)	7560-3 1109 (1200-3)		NA			

NW-1, 10 JUL 2025 to 07 AUG 2025

NW-1, 10 JUL 2025 to 07 AUG 2025