



APP CRS	Rwy Ldg	6300
006°	TDZE	6431
	Apt Elev	6451

RNAV (RNP) Y RWY 1
JACKSON HOLE (JAC)

RNP AR APCH.

 Inop table does not apply.
 For uncompensated Baro-VNAV systems, procedure NA
 below -27°C or above 54°C.

MALS

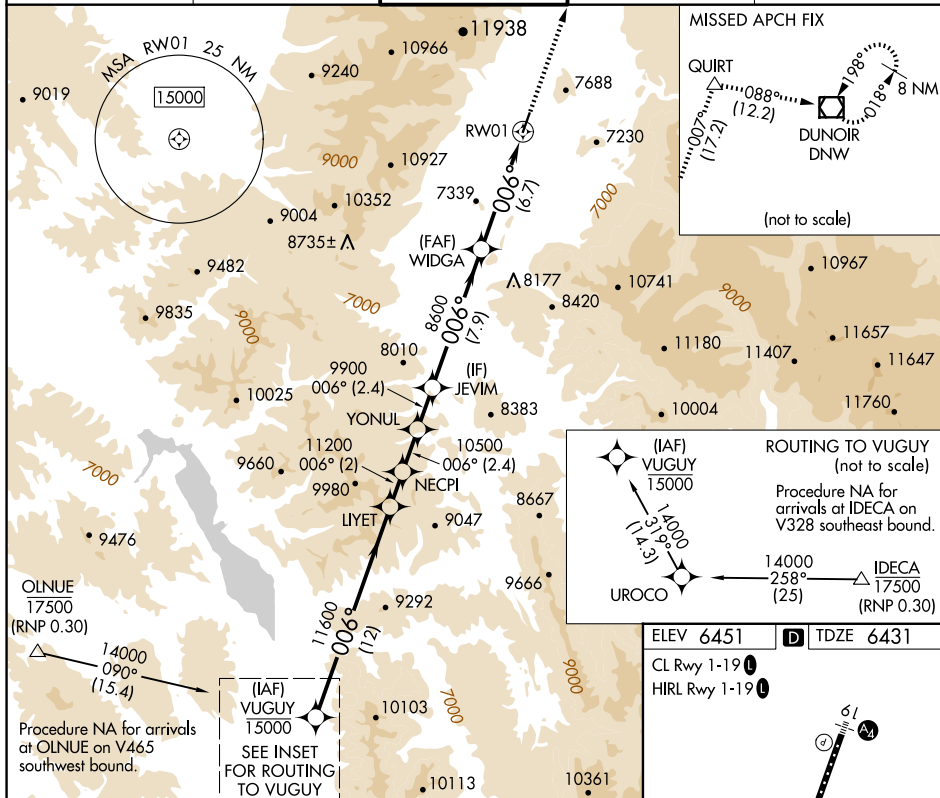
MISSED APPROACH: Climb to 14000 on track 007° to QUIRT and track 088° to DNW VOR/DME and hold, continue climb-in-hold to 14000.

D-ATIS
120.625

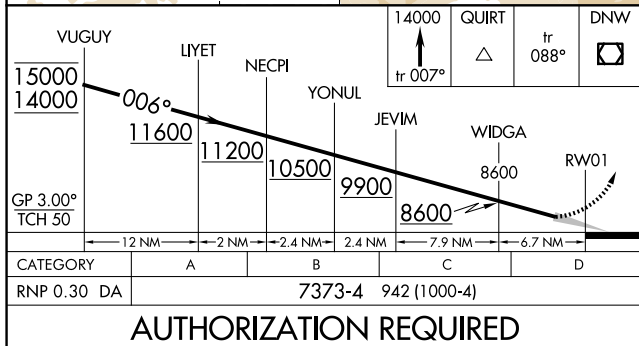
SALT LAKE CENTER
133.25 285.6

JACKSON TOWER ★
118.075 (CTAF) L

GND CON
124.55

UNICOM
122.95

ELEV 6451	D	TDZE 6431
-----------	----------	-----------

CL Rwy 1-19 **L**HIRL Rwy 1-19 **L**

TWR

★

Ⓟ

1/11/11

17

4

/

← 0

0

JAC

(R)

11

JACKSON, WYOMING

Amdt 1 13SEP18

43°36'N-110°44'W

JACKSON HOLF (JAC)

RNAV (RNP) Y RWY 1