

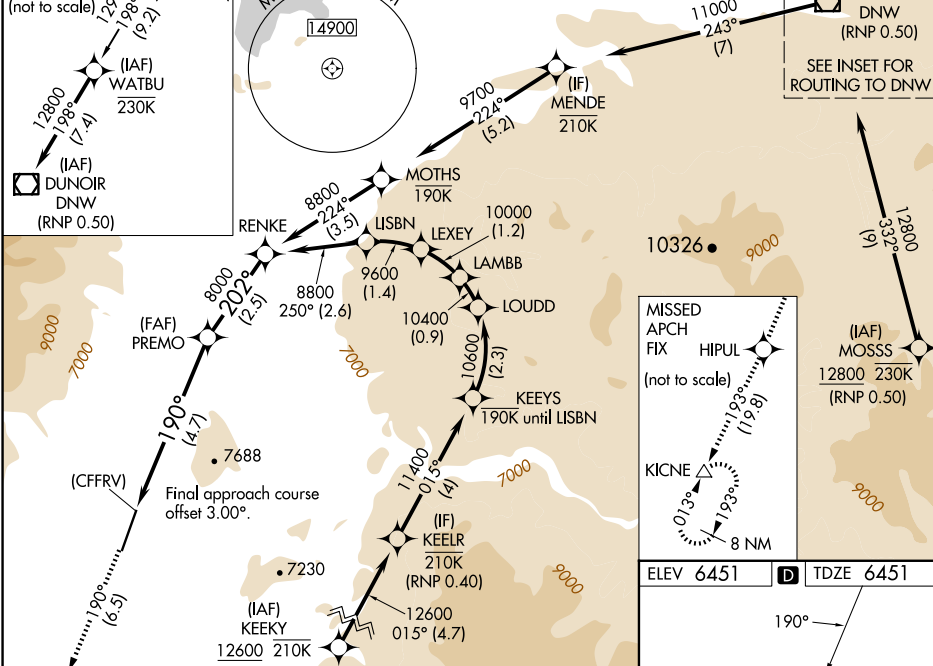
25163

RNAV (RNP) X RWY 19
JACKSON HOLE (JAC)

MISSED APPROACH: Climb to 14000 on track 190° to HIPUL and on track 193° to KICNE and hold, continue climb-in-hold to 14000. *Missed approach requires minimum climb of 226 feet per NM to 11600. #Missed approach requires minimum climb of 215 feet per NM to 11600.

UNICOM
122.95

(IAF)
DUNOIR
DNW
(RNP 0.50)
SEE INSET FOR
ROUTING TO DNW

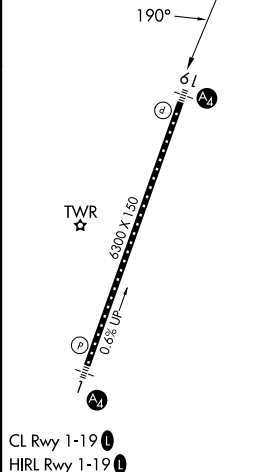


(CFFRV) 190° 8000

GP 3.0
TCH 5

CATEGORY	4.7 NM		2.5 NM	
	A	B	C	D
RNP 0.10 DA*		6777/40	326 (400-¾)	
RNP 0.20 DA#		6856/50	405 (500-1)	
RNP 0.30 DA#		6938/60	487 (500-1¼)	
RNP 0.30 DA		7045-13 _β	594 (600-13 _β)	

AUTHORIZATION REQUIRED

[illegible]

JACKSON HOLE (JAC)
RNAV (RNP) X RWY 19

NW-1, 10 JUL 2025 to 07 AUG 2025