

LOC/DME I-JAC 109.1 Chan 28	APP CRS 187°	Rwy Ldg 6300 TDZE 6451 Apt Elev 6451
---	------------------------	---

ILS Y or LOC Y RWY 19
JACKSON HOLE (JAC)

RADAR required for procedure entry at MOSSS.

T Circling NA for Cats A, B and C east of Rwy 1-19. Circling NA for
A Cat D. For inop ALS, increase SOSUE fix minimums S-LOC 19 Cats
❄ -22°C C and D visibility to 2½ SM. For inop ALS, increase S-LOC Cat
 C and D visibility to 3 SM.

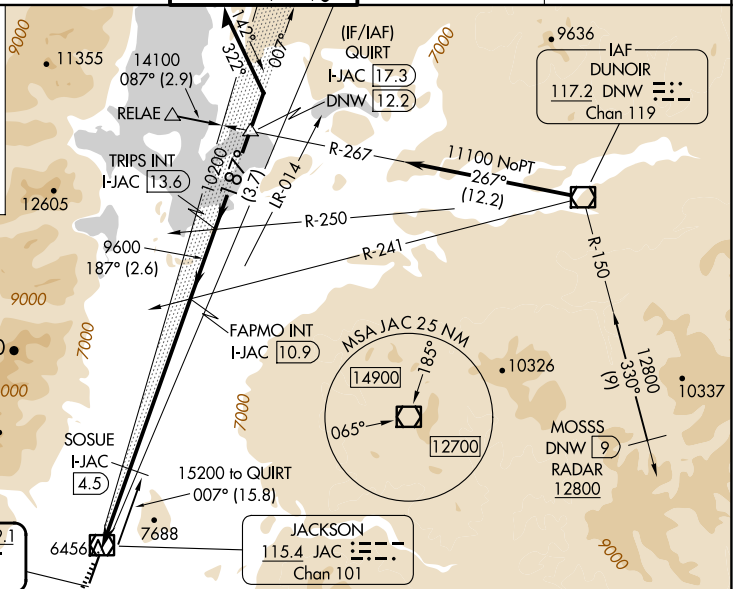
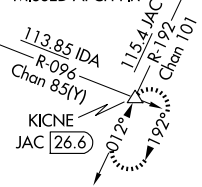
MALS



MISSED APPROACH: Climb to 14000
on JAC VOR/DME R-192 to KICNE
INT/JAC VOR/DME 26.6 DME and
hold, continue climb-in-hold to 14000.

D-ATIS 120.625	SALT LAKE CENTER 133.25 285.6	JACKSON TOWER ★ 118.075 (CTAF) 0	GND CON 124.55	UNICOM 122.95
-------------------	----------------------------------	-------------------------------------	-------------------	------------------

MISSED APCH FIX



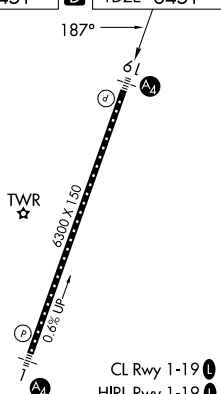
LOCALIZER 109.1
I-JAC :--
Chan 28

Use I-JAC DME when on the localizer course.

QUIRT
C 17

Remain
within 10 NM

FILEV 6451		TD7E 6451
------------	---	-----------



FAF to MAP 9.7 NM

Knots	60	90	120	150	180
Min:Sec	9:42	6:28	4:51	3:53	3:14

CATEGORY	A	B	C	D
S-ILS 19	7077-1½ 626 (700-1½)			
S-LOC 19	7540/55 1089 (1100-1)	7540-1¼ 1089 (1100-1¼)	7540-2½ 1089 (1100-2½)	
CIRCLING	7540-1¼ 1089 (1100-1¼)	7540-1½ 1089 (1100-1½)	7540-3 1089 (1100-3)	NA
SOSUE FIX MINIMUMS (DME REQUIRED)				
S-LOC 19	7300/40 849 (900-¾)	7300/55 849 (900-1)	7300-2 849 (900-2)	
CIRCLING	7300-1¼ 849 (900-1¼)		7400-2¾ 949 (1000-2¾)	NA