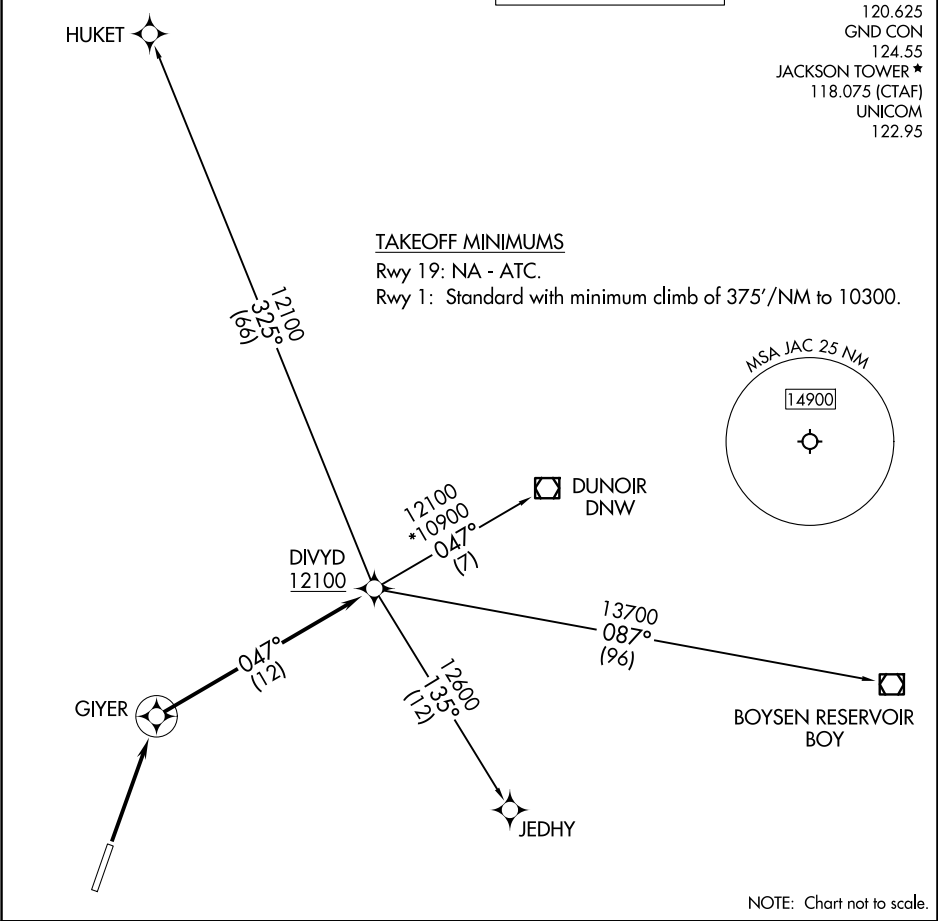


RNAV 1 - GPS.	TOP ALTITUDE: ASSIGNED BY ATC	SALT LAKE CENTER 133.25 285.6 D-ATIS 120.625 GND CON 124.55 JACKSON TOWER * 118.075 (CTAF) UNICOM 122.95
RADAR required for non-GPS equipped aircraft.		



<div><div>▼</div><div>DEPARTURE ROUTE DESCRIPTION</div></div> <div><div><u>TAKEOFF RUNWAY 1:</u> Climb direct GIYER, then on track 047° to cross DIVYD at or above 12100, thence. . . .</div><div>(transition). Maintain ATC assigned altitude, expect filed altitude 10 minutes after departure.</div><div><u>BOYSEN RESERVOIR TRANSITION (DIVYD2.BOY)</u></div><div><u>DUNOIR TRANSITION (DIVYD2.DNW)</u></div><div><u>HUKET TRANSITION (DIVYD2.HUKET)</u></div><div><u>JEDHY TRANSITION (DIVYD2.JEDHY)</u></div></div>
---