

VOR/DME SSM	APP CRS	Rwy Idg	5056
112.2	337°	TDZE	716
Chan 59		Apt Elev	716

VOR RWY 32

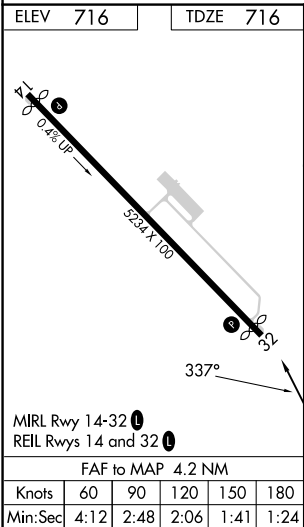
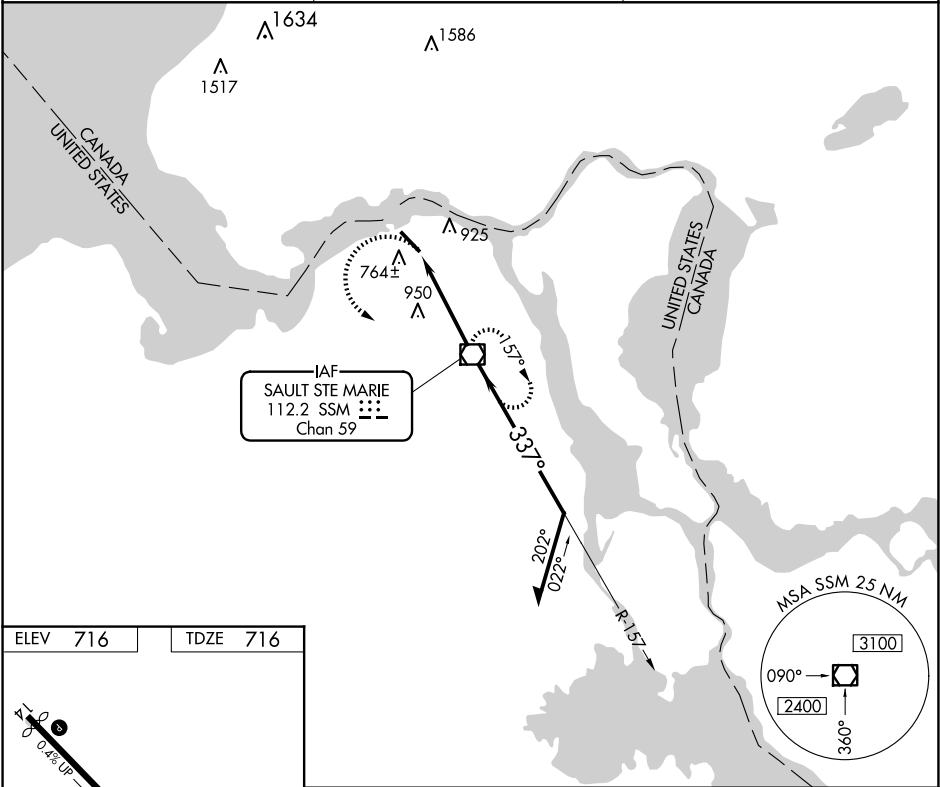
SAULT STE MARIE MUNI/SANDERSON FLD (A.NJ)

⚠

When local altimeter setting not received, use Chippewa County Intl altimeter setting and increase all MDA 60 feet and increase S-32 Cat C visibility to 1¾ mile.
Rwy 32 helicopter visibility reduction below ¾ SM NA.

MISSED APPROACH:
Climbing left turn to 2400
direct SSM VOR/DME and hold.

ASOS 118,375	TORONTO CENTER 132.65 344.5	UNICOM 122.7 (CTAF) 0
-----------------	--------------------------------	--------------------------



2400	SSM	SSM VOR/DME	6000	157°	2400	337°	2000	2.81°	TCH 30	4.2 NM	SSM (4.2)	SSM	2400
Remain within 10 NM													
CATEGORY	A	B	C	D									
S-32	1260-1	544 (600-1)	1260-1½ 544 (600-1½)	NA									
CIRCLING	1280-1	564 (600-1)	1320-1¾ 604 (700-1¾)	NA									

EC-1, 10 JUL 2025 to 07 AUG 2025

EC-1, 10 JUL 2025 to 07 AUG 2025