

SAULT STE MARIE, MICHIGAN

AL-503 (FAA)

23278

WAAS CH <b>49122</b> <b>W32A</b>	APP CRS <b>323°</b>	Rwy Idg <b>5056</b> TDZE <b>716</b> Apt Elev <b>716</b>
--	------------------------	---

## RNAV (GPS) RWY 32

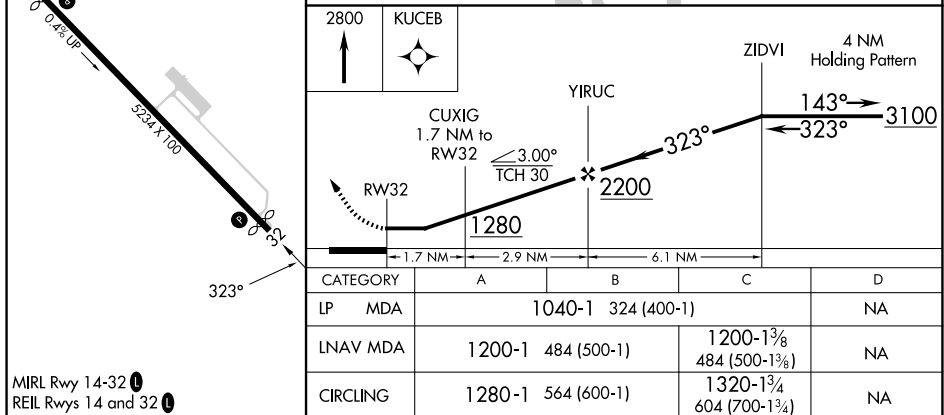
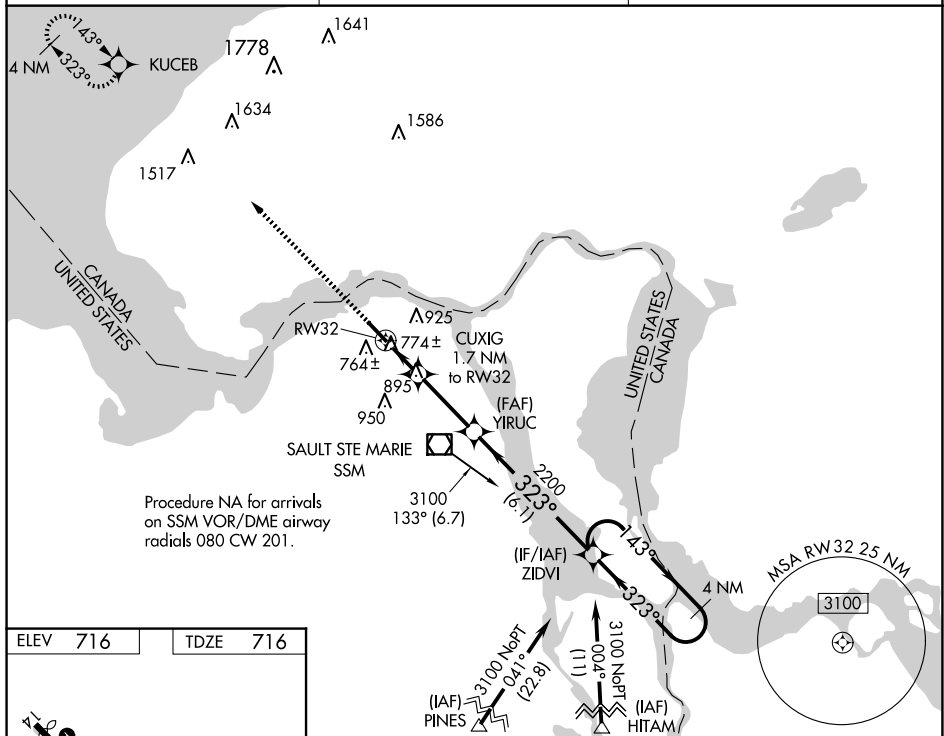
SAULT STE MARIE MUNI/SANDERSON FLD (ANJ)

RNP APCH.

**T** Rwy 32 helicopter visibility reduction below  $\frac{3}{4}$  SM NA. When local altimeter setting not received, use Chippewa County Intl altimeter setting and increase all MDA 60 feet, and increase LP Cat C visibility  $\frac{1}{8}$  mile and LNAV Cat C visibility  $\frac{1}{4}$  mile.

**MISSED APPROACH:** Climb to 2800 direct KUCEB and hold.

ASOS <b>118.375</b>	TORONTO CENTER <b>132.65 344.5</b>	UNICOM <b>122.7 (CTAF) 0</b>
------------------------	---------------------------------------	---------------------------------



SAULT STE MARIE, MICHIGAN

Orig-B 08NOV18

SAULT STE MARIE MUNI/SANDERSON FLD (A.N.T.)

46°29'N-84°22'W

**RNAV (GPS) RWY 32**

EC-1, 10 JUL 2025 to 07 AUG 2025

EC-1, 10 JUL 2025 to 07 AUG 2025