

WAAS CH <b>70622</b> <b>W14A</b>	APP CRS <b>143°</b>	Rwy Idg <b>5054</b> TDZE <b>712</b> Apt Elev <b>716</b>
--	------------------------	---

## RNAV (GPS) RWY 14

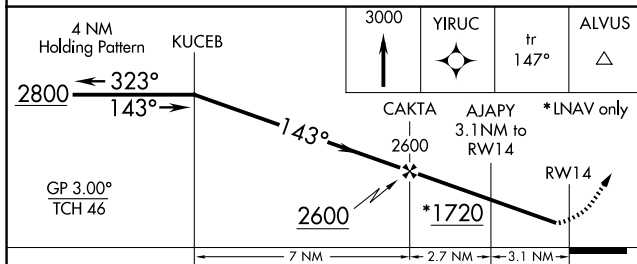
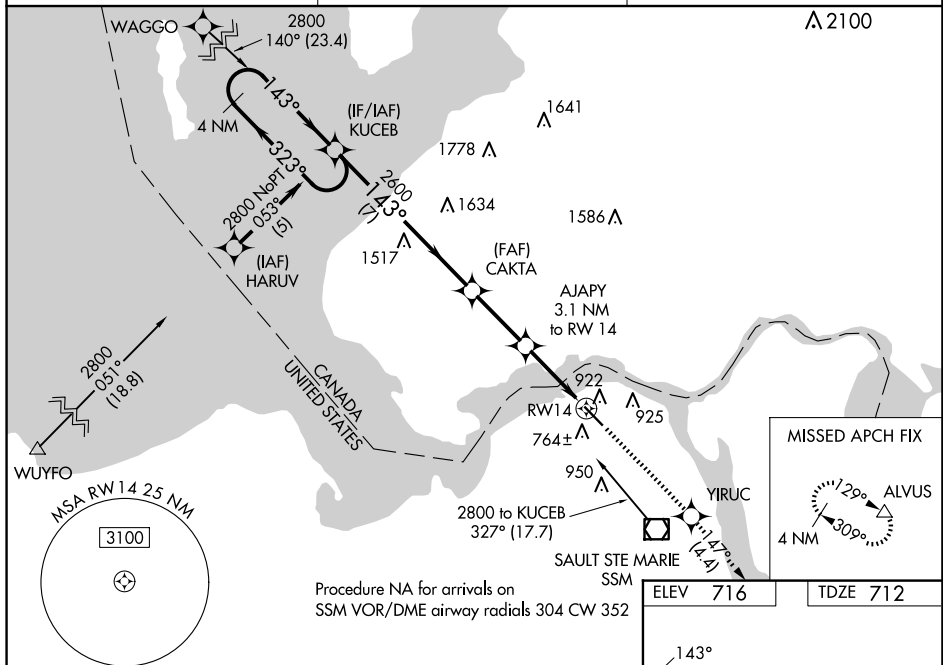
SAULT STE MARIE MUNI/SANDERSON FLD (ANJ)

RNP APCH.

- T** For uncompensated Baro-VNAV systems, LNAV/VNAV NA below -16°C or above 54°C.
- A** Rwy 14 helicopter visibility reduction below  $\frac{3}{4}$  SM NA. When local altimeter setting not received, use Chippewa County Intl altimeter setting and increase all DA 45 feet and all MDA 60 feet. Increase LNAV/VNAV all Cts visibilities to 1 $\frac{1}{4}$  mile and LNAV Cts C visibility to 1 $\frac{3}{4}$  mile.

**MISSED APPROACH:**  
Climb to 3000 direct  
YIRUC and on track  
147° to ALVUS and hold.

ASOS <b>118.375</b>	TORONTO CENTER <b>132.65 344.5</b>	UNICOM <b>122.7 (CTAF) 0</b>
------------------------	---------------------------------------	---------------------------------



CATEGORY	A	B	C	D
LPV DA	962-1	250 (300-1)		NA
LNAV/VNAV DA	1137-1 $\frac{3}{8}$	425 (500-1 $\frac{3}{8}$ )		NA
LNAV MDA	1240-1	528 (600-1)	1240-1 $\frac{5}{8}$ 528 (600-1 $\frac{5}{8}$ )	NA

