

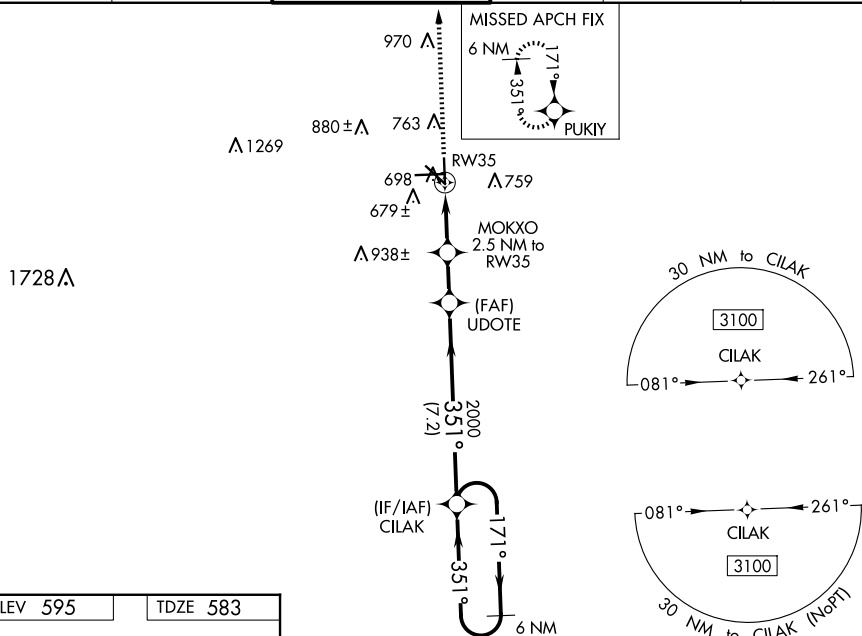
WAAS CH 70632 W35A	APP CRS 351°	Rwy Idg 5214 TDZE 583 Apt Elev 595
--	------------------------	---

RNAV (GPS) RWY 35
SAN MARCOS RGNL (HYI)

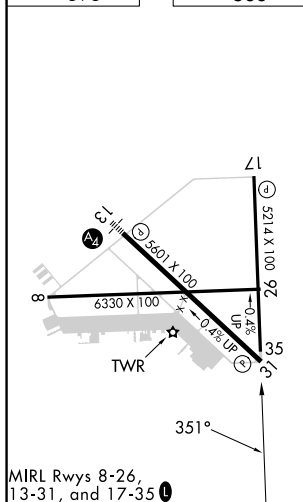
T Baro-VNAV NA when using New Braunfels altimeter setting. For uncompensated Baro-VNAV systems, LNAV/VNAV NA below -16°C (3°F) or above 54°C (130°F). When local altimeter setting not received, use New Braunfels altimeter setting and increase all DA 43 feet and all MDA 60 feet; increase LPV all Cats and LNAV/VNAV all Cats visibility $\frac{1}{8}$ mile; and increase LNAV Cat C/D/E visibility and Circling Cat C/D visibility $\frac{1}{4}$. Circling NA for Cat E SW of Rwy 13-31. DME/DME RNP-0.3 NA. VDP NA with New Braunfels altimeter setting.

MISSED APPROACH:
Climb to 3100 direct
PUKIJ and hold.

ATIS 120.825	AUSTIN APP CON 119.0 370.85	SAN MARCOS TOWER ★ 126.825 (CTAF) L	GND CON 120.125	CLNC DEL 120.125	CLNC DEL 121.35 (when twr closed)
------------------------	---------------------------------------	--	---------------------------	----------------------------	--



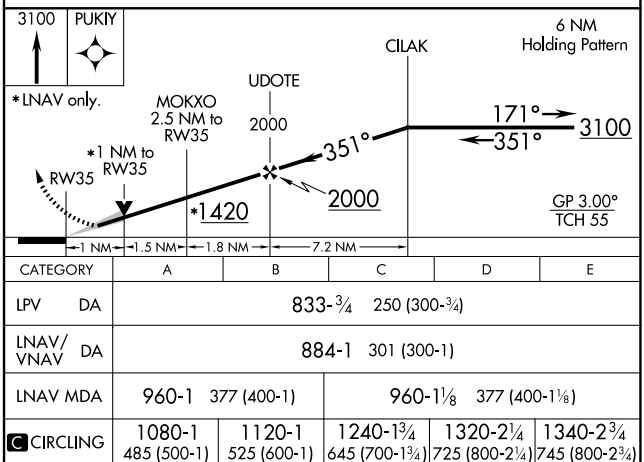
ELEV 595		TDZE 583
----------	--	----------



MIRL Rwy's 8-26,
13-31, and 17-35 **L**

AUSTIN, TEXAS

Orig-B 23JUN16



SAN MARCOS RGNL (HYI)

RNAV (GPS) RWY 35