

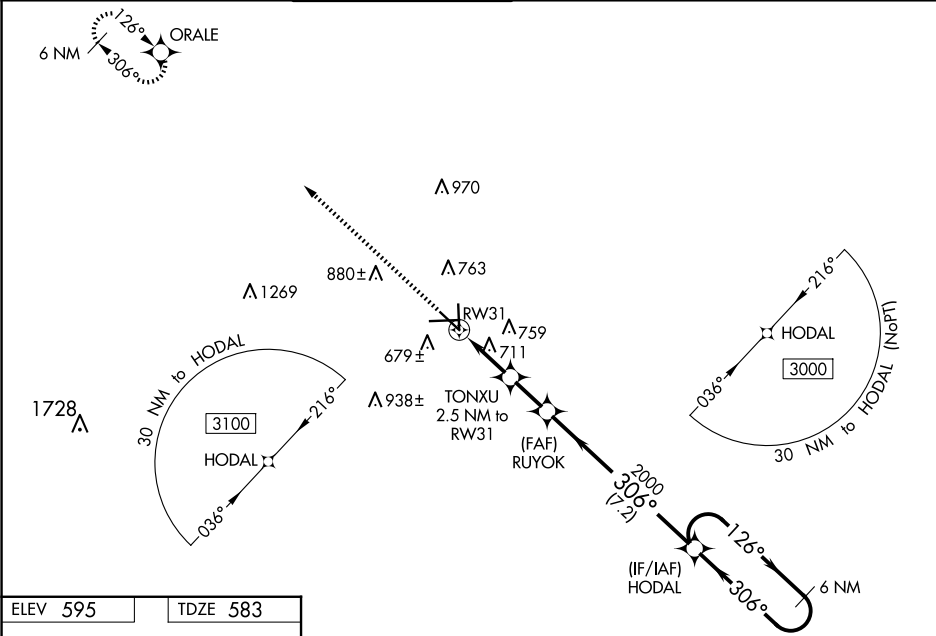
WAAS CH <b>90432</b> <b>W31A</b>	APP CRS <b>306°</b>	Rwy Idg TDZE Apt Elev <b>5601</b> <b>583</b> <b>595</b>
--	------------------------	--

**RNAV (GPS) RWY 31**  
SAN MARCOS RGNL (HYI)

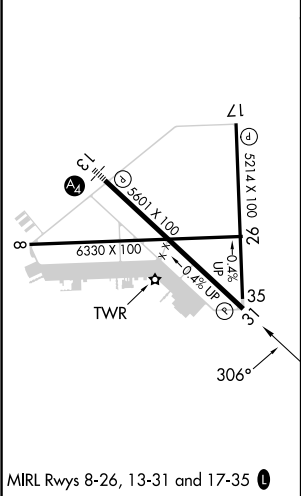
**⚠** Baro-VNAV NA when using New Braunfels altimeter setting. For uncompensated Baro-VNAV systems, LNAV/VNAV NA below -16°C (3°F) or above 54°C (130°F). When local altimeter setting not received, use New Braunfels altimeter setting and increase all DA 43 feet and all MDA 60 feet; increase LPV all Cats and LNAV/VNAV all Cats visibility 1/8 mile and LNAV Cat C/D/E and Circling Cat C/D visibility 1/4. Circling NA for Cat E SW of Rwy 13-31. DME/DME RNP-0.3 NA. VDP NA with New Braunfels altimeter setting. Helicopter visibility reduction below 3/4 SM NA.

**MISSED APPROACH:**  
Climb to 3500 direct ORALE and hold.

ATIS <b>120.825</b>	AUSTIN APP CON <b>119.0 370.85</b>	SAN MARCOS TOWER★ <b>126.825</b> (CTAF) <b>📶</b>	GND CON <b>120.125</b>	CLNC DEL <b>120.125</b>	CLNC DEL <b>121.35</b> (when twr closed)
------------------------	---------------------------------------	---	---------------------------	----------------------------	--



ELEV <b>595</b>	TDZE <b>583</b>
-----------------	-----------------



3500 ↑	ORALE ✦				
*LNAV only.					
1.1 NM	1.4 NM	1.8 NM	7.2 NM		
CATEGORY	A	B	C	D	E
LPV DA	860-7/8 277 (300-7/8)				
LNAV/VNAV DA	906-1 323 (400-1)				
LNAV MDA	980-1 397 (400-1)		980-1 3/8 397 (400-1 1/8)		
<b>C</b> CIRCLING	1080-1 485 (500-1)	1120-1 525 (600-1)	1240-1 3/4 645 (700-1 1/4)	1320-2 1/4 725 (800-2 1/4)	1340-2 3/4 745 (800-2 3/4)

SC-3, 10 JUL 2025 to 07 AUG 2025

SC-3, 10 JUL 2025 to 07 AUG 2025