

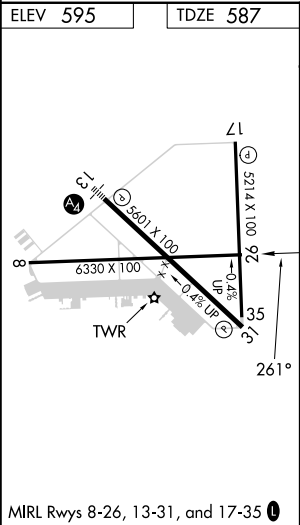
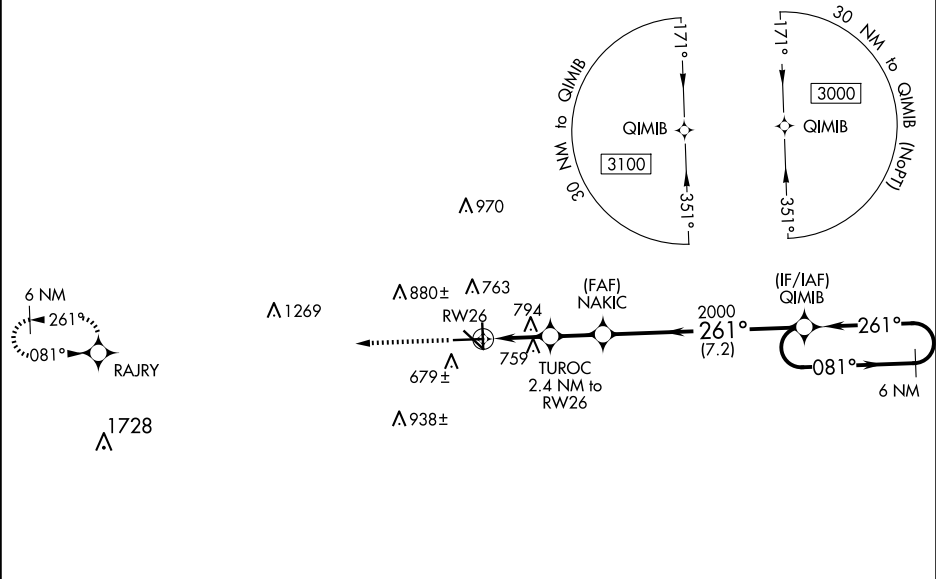
WAAS CH <b>78332</b> <b>W26A</b>	APP CRS <b>261°</b>	Rwy Idg <b>6330</b> TDZE <b>587</b> Apt Elev <b>595</b>
--	------------------------	---

RNAV (GPS) RWY 26  
SAN MARCOS RGNL (HYI)

Baro-VNAV NA when using New Braunfels altimeter setting. For uncompensated Baro-VNAV systems, LNAV/VNAV NA below -16°C (3°F) or above 54°C (130°F). When local altimeter setting not received, use New Braunfels altimeter setting and increase all DA 43 feet and all MDA 60 feet; increase LPV and LNAV/VNAV all Cats, and LNAV Cat C/D/E visibility 1/8 mile and Circling Cat C/D visibility 1/4 mile. Circling NA for Cat E SW of Rwy 13-31. DME/DME RNP-0.3 NA. VDP NA with New Braunfels altimeter setting. Helicopter visibility reduction below 3/4 SM NA.

MISSED APPROACH:  
Climb to 3000 direct RAJRY and hold.

ATIS <b>120.825</b>	AUSTIN APP CON <b>119.0 370.85</b>	SAN MARCOS TOWER★ <b>126.825 (CTAF) 0</b>	GND CON <b>120.125</b>	CLNC DEL <b>120.125</b>	CLNC DEL <b>121.35</b> (when twr closed)
------------------------	---------------------------------------	--	---------------------------	----------------------------	--



3000 ↑	RAJRY ✦					6 NM Holding Pattern
*LNAV only.		TUROC 2.4 NM to RW26	NAKIC 2000	QIMIB	3000	081° ← 261°
RW26		*1.3 NM to RW26	*1400	2000	GP 3.00° TCH 55	
1.3 NM		1.1 NM	1.9 NM	7.2 NM		
CATEGORY	A	B	C	D	E	
LPV DA	837-¾ 250 (300-¾)					
LNAV/ VNAV DA	866-⅞ 279 (300-⅞)					
LNAV MDA	1060-1	473 (500-1)	1060-1⅜ 473 (500-1⅜)			
CIRCLING	1080-1 485 (500-1)	1120-1 525 (600-1)	1240-1¾ 645 (700-1¼)	1320-2¼ 725 (800-2¼)	1340-2¾ 745 (800-2¾)	

SC-3, 10 JUL 2025 to 07 AUG 2025

SC-3, 10 JUL 2025 to 07 AUG 2025