

WAAS CH 86232 W13A	APP CRS 126°	Rwy Idg 5601 TDZE 593 Apt Elev 595
--	------------------------	---

RNAV (GPS) RWY 13
SAN MARCOS RGNL (HYI)

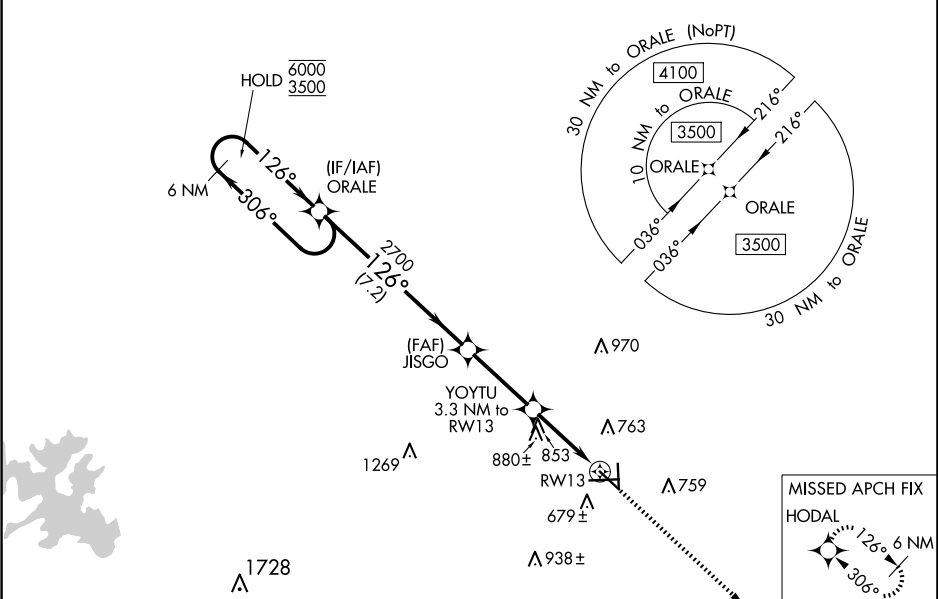
RNP APCH-GPS.

⚠ Circling NA for Cat E southwest of Rwy 13-31. Inop table does not apply to LPV all Cats.
⚠ For uncompensated Baro-VNAV systems, LNAV/VNAV NA below -16°C or above 54°C.
For inop ALS, increase LNAV/VNAV Cat E visibility to 1 SM and LNAV Cat E visibility to 1½ SM.

MALS

MISSED APPROACH:
Climb to 3000 direct
HODAL and hold.

ATIS 120.825	AUSTIN APP CON 119.0 370.85	SAN MARCOS TOWER★ 126.825 (CTAF) 0	GND CON 120.125	CLNC DEL 120.125	CLNC DEL 121.35 (when twr closed)
------------------------	---------------------------------------	---	---------------------------	----------------------------	--



ELEV 595

TDZE 593

6 NM Holding Pattern

ORALE

JISGO

YOYTU 3.3 NM to RW13

1.5 NM to RW13

RW13

3000

HODAL

GP 3.00°

TCH 57

7.2 NM

3.1 NM

1.8 NM

1.5 NM

CATEGORY	A	B	C	D	E
LPV DA		793-¾	200 (200-¾)		
LNAV/VNAV DA		946-¾	353 (400-¾)		
LNAV MDA	1120-¾	527 (600-¾)	1120-1¼	527 (600-1¼)	
CIRCLING	1120-1	525 (600-1)	1240-1¾ 645 (700-1¾)	1320-2¼ 725 (800-2¼)	1340-2¾ 745 (800-2¾)

MIRL Rwys 8-26, 13-31, and 17-35

5601 X 100

6330 X 100

521.4 X 100

26

26

35

5

0.4% UP

0.4% UP

TWR

SC-3, 10 JUL 2025 to 07 AUG 2025

SC-3, 10 JUL 2025 to 07 AUG 2025