

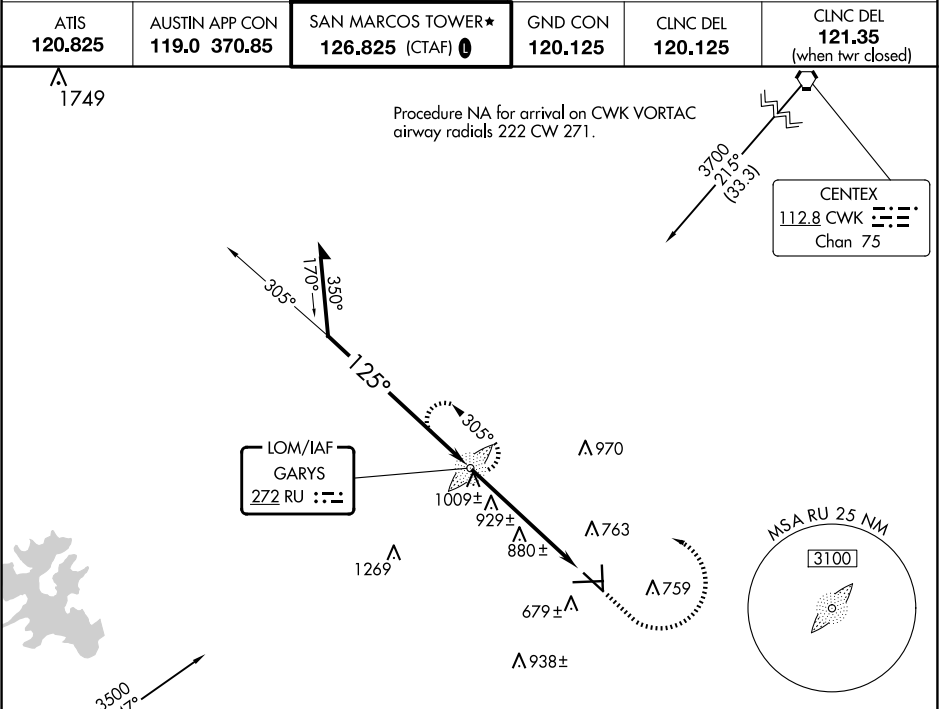
LOM	RU	APP CRS	Rwy Idg	5601
272		125°	TDZE	593
			Apt Elev	595

NDB RWY 13
SAN MARCOS RGNL (HYI)

MALS

MISSED APPROACH: Climb to 2000 then climbing left turn to 3200 direct GARYS LOM and hold.

ATIS	AUSTIN APP CON	SAN MARCOS TOWER★	GND CON	CLNC DEL	CLNC DEL
120.825	119.0 370.85	126.825 (CTAF)	120.125	120.125	121.35 (when twr closed)



ELEV 595

TDZE 593

125°

3200

2700

305°

125°

3.49°

TCH 55

5.5 NM

2000

3200

RU

VGSI and descent angles not coincident (VGSI Angle 3.00/TCH 57).

Remain within 10 NM

RU LOM GARYS

521.4 X 100

26

35

6330 X 100

0.4% UP

0.4% UP

TWR

L1

5601 X 100

8

6

5

CATEGORY	A	B	C	D
S-13	1240-3/4 647 (700-3/4)		1240-15/8 647 (700-1%)	
CIRCLING	1240-1 645 (700-1)		1240-17/8 645 (700-1%)	1320-21/4 725 (800-21/4)

MIRL Rwy 8-26, 13-31, and 17-35

FAF to MAP 5.5 NM

Knots	60	90	120	150	180
Min:Sec	5:30	3:40	2:45	2:12	1:50

SC-3, 10 JUL 2025 to 07 AUG 2025

SC-3, 10 JUL 2025 to 07 AUG 2025