

ILS or LOC RWY 13
SAN MARCOS RGNL (HYI)

MISSED APPROACH: Climb to 2000 then climbing left turn to 3200 direct GARYS LOM/INT and hold.




(when twr closed)

CENTEX
112.8 CWK $\frac{1}{2} \times \frac{1}{2} \times \frac{1}{2}$
Chgn 75






Procedure NA for arrival on SAT VORTAC
airway radials 002 CW 081.

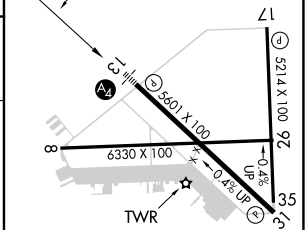
SAN ANTONIO
116.8 SAT 
Chan 115

Remain
within 15 NM

RU LOM
GARYS INT

3200 — 126°
GS 3 00° 2700

2000	3200	RU
		

MIRL Rwy 8-26, 13-31, and 17-35 L

FAF to MAP 5.5 NM

Knots	60	90	120	150	180
Min:Sec	5:30	3:40	2:45	2:12	1:50