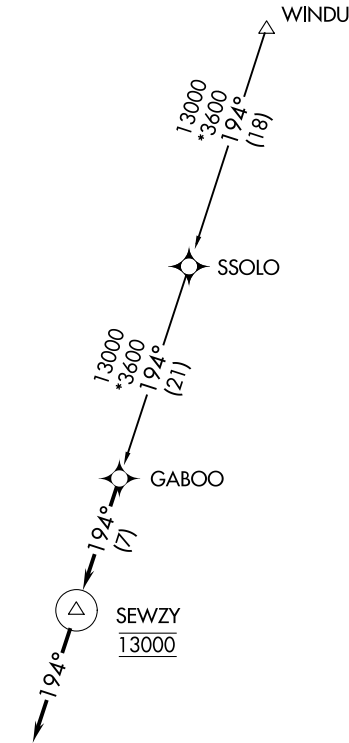


(GABOO.GABOO1) 25051  
GABOO ONE ARRIVAL (RNAV)

AL-502 (FAA) AUSTIN, TEXAS

AUSTIN APP CON  
127.225 317.65  
HYI ATIS  
120.825  
T74 AWOS-3PT  
119.75

- NOTE: RADAR required.  
NOTE: RNAV 1.  
NOTE: DME/DME/IRU or GPS required.  
NOTE: Turbojet and turboprop aircraft only.



LAGO VISTA TX/RUSTY ALLEN

LAKEWAY AIRPARK

SAN MARCOS RGNL

TAYLOR MUNI

NOTE: Chart not to scale.

ARRIVAL ROUTE DESCRIPTION

SSOLO TRANSITION (SSOLO.GABOO1)  
WINDU TRANSITION (WINDU.GABOO1)

LANDING ALL AIRPORTS: From GABOO on track 194° to cross SEWZY at 13000, then on track 194°. Expect RADAR vectors to final approach course.