

WAAS CH 99607 W17A	APP CRS 173°	Rwy Idg TDZE 1952 Apt Elev 1953
--	------------------------	---

RNAV (GPS) RWY 17

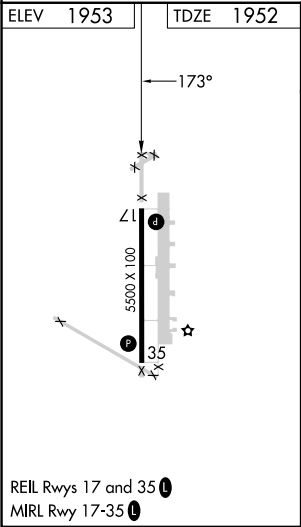
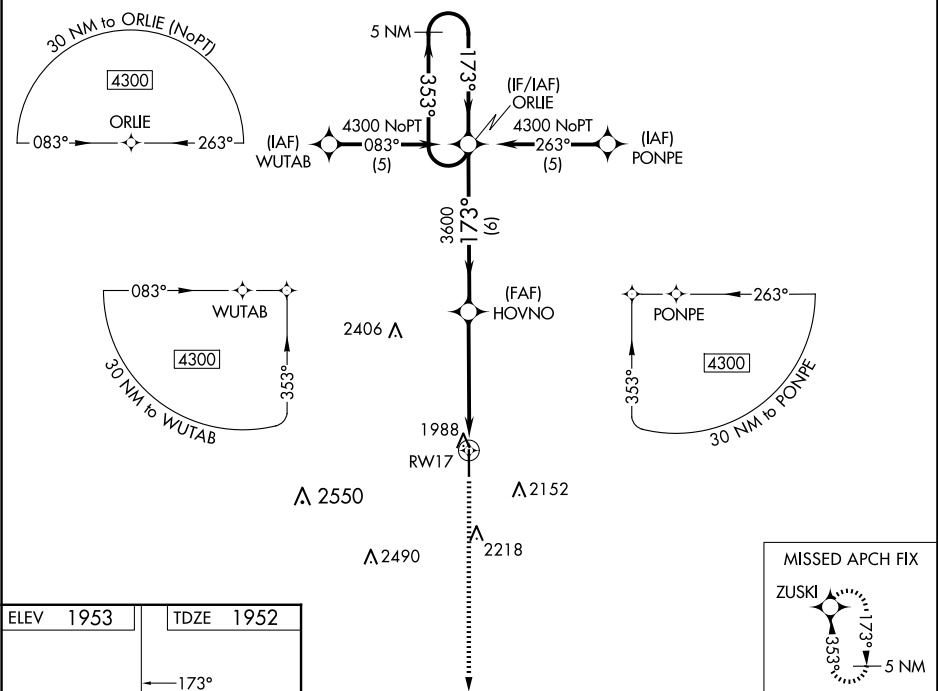
PRATT RGNL (PTT)

⚠

For uncompensated Baro-VNAV systems, LNAV/VNAV NA below -18°C (0°F) or above 54°C (130°F). DME/DME RNP-0.3 NA. When local altimeter setting not received, use Great Bend altimeter setting: Increase LPV DA to 2301 Feet and all visibilities ¼ SM; Increase LNAV/VNAV DA to 2356 feet and all visibilities ½ SM; Increase all MDAs 100 feet and visibility Cat C ¼ SM. Baro-VNAV and VDP NA when using Great Bend altimeter setting.

MISSED APPROACH: Climb to 4300 direct ZUSKI and hold.

AWOS-3PT 118.725	KANSAS CITY CENTER 118.8 322.425	UNICOM 122.8 (CTAF) 0
----------------------------	--	---------------------------------



5 NM Holding Pattern				ORLIE	4300	ZUSKI
4300				353°	173°	
GP 3.00°				HOVNO	3600	
TCH 40						
				6 NM	3.9 NM	1.1 NM
CATEGORY	A	B	C	D		
LPV DA	2202-1	250 (300-1)		NA		
LNAV/VNAV DA	2257-1	305 (400-1)		NA		
LNAV MDA	2340-1	388 (400-1)		NA		
CIRCLING	2380-1 427 (500-1)	2420-1 467 (500-1)	2580-1¾ 627 (700-1¾)	NA		