

VOR/DME or TACAN Y RWY 5R

[USAF]

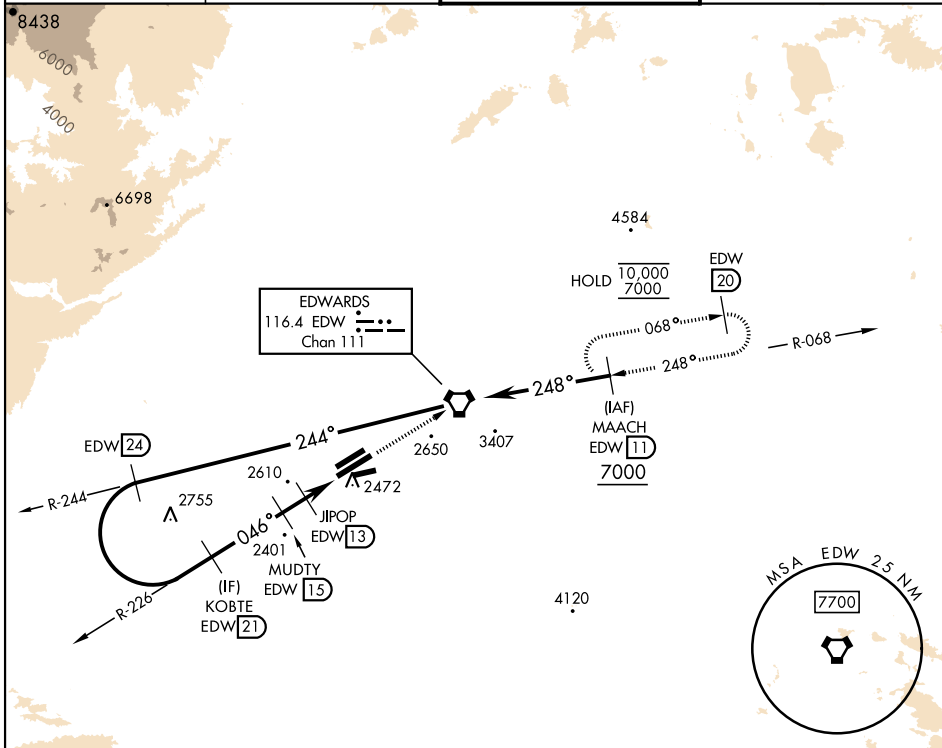
EDWARDS AFB (KEDW)

VORTAC EDW 116.4 Chan 111	APCH CRS 046°	Rwy Idg 15,024 TDZE 2303 Arpt Elev 2311
---	-------------------------	--

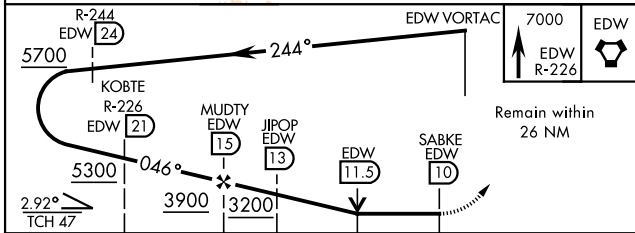
★ Circling not authorized NW of Rwy 5L-23R.
Circling not authorized at night to Rwy 5L-23R.

MISSED APPROACH: Track EDW VORTAC R-226 to EDW.
Intercept EDW R-068 to MAACH and hold. Maintain 7000.
Missed approach requires use of RNAV or ATC radar monitoring.

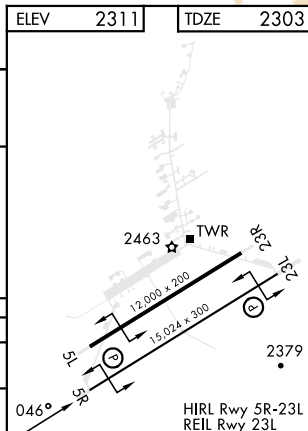
ATIS ★ 127.425 269.9	JOSHUA APP/DEP CON 133.65 348.7	TOWER ★ 120.7 (CTAF) 318.1 (CTAF)	GND CON 121.8 225.4
--------------------------------	---	---	-------------------------------



EMERG SAFE ALT 100 NM 16,500



CATEGORY	A	B	C	D	E
S-5R	2820-1 517 (600-1)	2820-1½ 517 (600-1½)	2820-2 517 (600-2)	2880-1½ 569 (600-1½)	2880-2 569 (600-2)
CIRCLING*	2880-1 569 (600-1)	2880-1½ 569 (600-1½)	2880-2 569 (600-2)	2880-1½ 569 (600-1½)	2880-2 569 (600-2)



EDWARDS, CALIFORNIA

34°54'N-117°53'W

EDWARDS AFB (KEDW)

Amdt 3 23APR20

VOR/DME or TACAN Y RWY 5R

SW-3, 10 JUL 2025 to 07 AUG 2025

SW-3, 10 JUL 2025 to 07 AUG 2025