

EDWARDS, CALIFORNIA

VOR/DME or TACAN Y RWY 23L

VORTAC EDW 116.4 Chan 111	APCH CRS 226°	Rwy Idg 15,024 TDZE 2286 Arpt Elev 2311
--	-------------------------	--

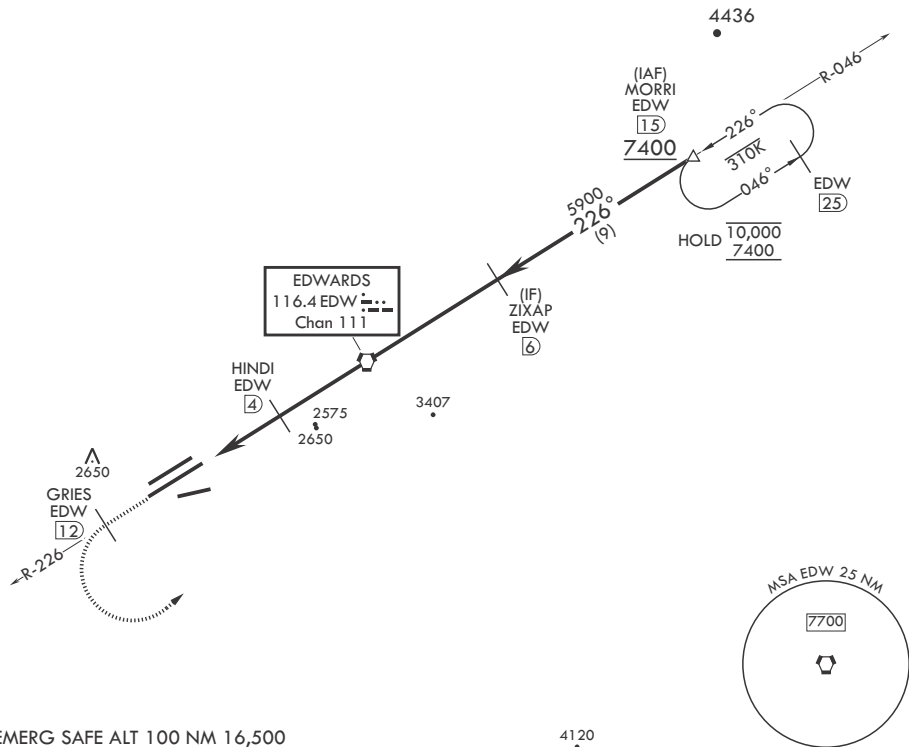
- (USAF)

EDWARDS AFB (KEDW)

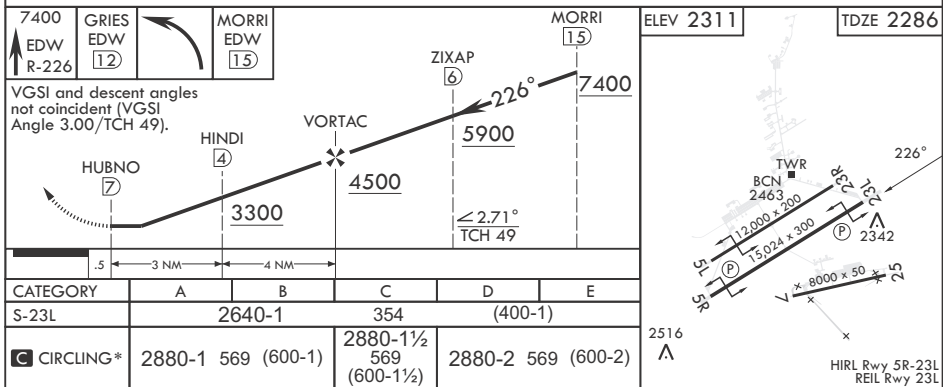
T * Circling not authorized NW of Rwy 5L-23R.
Circling not authorized at night to Rwy
5L-23R.

MISSED APPROACH: Climb to 7400. Track EDW VORTAC R-226 outbound to GRIES, then turn left direct MORRI and hold. Missed Approach requires use of RNAV or ATC RADAR monitoring.

ATIS★ 127.425 269.9	JOSHUA APP CON/DEP CON 133.65 348.7	TOWER★ 120.7 (CTAF) 318.1 (CTAF)	GND CON 121.8 225.4
------------------------	--	-------------------------------------	------------------------



EMERG SAFE ALT 100 NM 16,500



EDWARDS, CALIFORNIA

34°54'N - 117°53'W

EDWARDS AFB (KEDW)

Amdt 2 23APR20

VOR/DME or TACAN Y RWY 23L

SW-3, 10 JUL 2025 to 07 AUG 2025

SW-3, 10 JUL 2025 to 07 AUG 2025