



EDWARDS, CALIFORNIA

25079

HI-TACAN Z RWY 23L

| | | |
|---------------------------------|------------------|--|
| VORTAC EDW 116.4 Chan 111 | APCH CRS 226° | Rwy Idg TDZE 15,024 2286 Arpt Elev 2311 |
|---------------------------------|------------------|--|

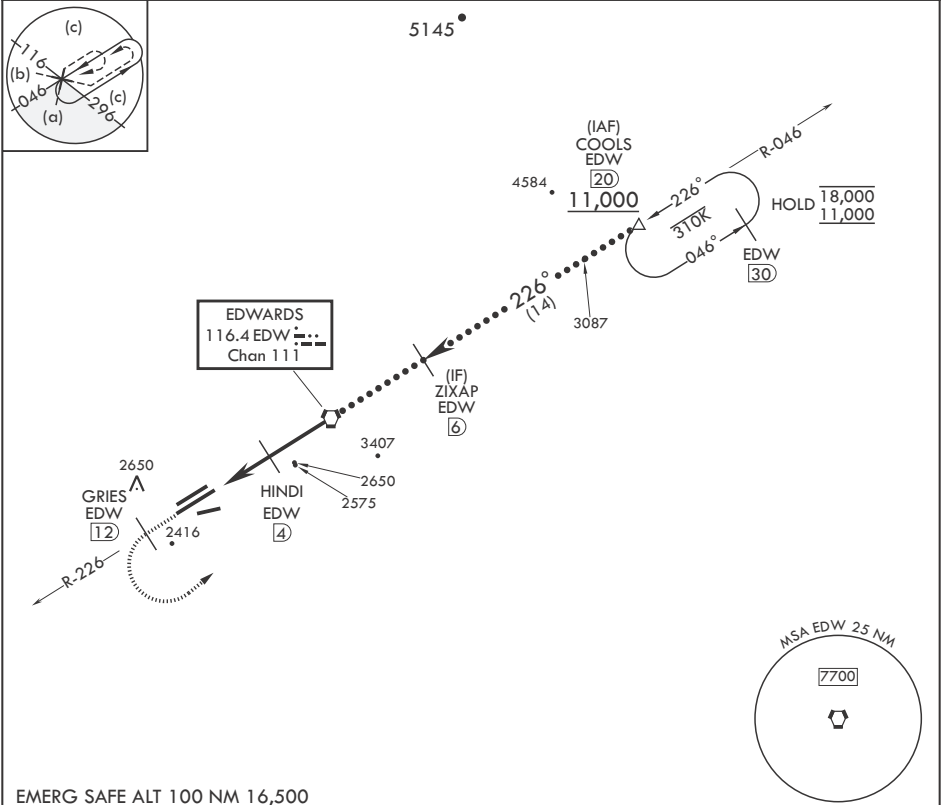
- (USAF)

EDWARDS AFB (KEDW)

⚠ * Circling NA NW of Rwy 5L-23R. Circling not authorized at night to Rwy 5L-23R.

MISSED APPROACH: Climb to 11,000. Track EDW VORTAC R-226 outbound to GRIES, then turn left direct COOLS and hold. Missed Approach requires use of RNAV or ATC RADAR monitoring.

| | | | |
|-------------------------|--|--------------------------------------|------------------------|
| ATIS ★ 127.425 269.9 | JOSHUA APP CON/DEP CON 133.65 348.7 | TOWER ★ 120.7 (CTAF) 318.1 (CTAF) | GND CON 121.8 225.4 |
|-------------------------|--|--------------------------------------|------------------------|



EMERG SAFE ALT 100 NM 16,500

11,000
EDW
R-226

GRIES
EDW
12

COOLS
EDW
20

VGSI and descent angles not coincident (VGSI Angle 3.00/TCH 49).

COOLS
EDW
20

HUBNO
7

HINDI
4

VORTAC
4500

ZIXAP
6

COOLS
20

11,000
5900
3300
4500

≤ 2.71°
TCH 49

CATEGORY

C

D

E

S-23L

2640-1

354

(400-1)

C CIRCLING*

2880-1½
569 (600-1½)

2880-2

569

(600-2)

ELEV 2311

TDZE 2286

EDWARDS, CALIFORNIA

34°54'N - 117°53'W

EDWARDS AFB (KEDW)

Amndt 1 30JAN20

HI-TACAN Z RWY 23L



SW-3, 10 JUL 2025 to 07 AUG 2025

SW-3, 10 JUL 2025 to 07 AUG 2025