

EDWARDS, CALIFORNIA

HI-ILS or LOC/DME Z RWY 23L

LOC I-EDW <u>110.1</u>	APCH CRS 226°	Rwy Idg 15,024 TDZE 2286 Arpt Elev 2311
----------------------------------	-------------------------	--

- (USAF)

EDWARDS AFB (KEDW)

T * Circling not authorized NW of Rwy 5L-23R.
Circling not authorized at night to Rwy
5L-23R.

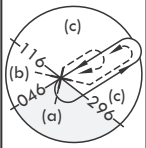
MISSED APPROACH: Climb to 11,000. Track EDW VORTAC R-226 outbound to GRIES, then turn left direct COOLS and hold. Missed Approach requires use of RNAV or ATC RADAR monitoring.

ATIS★
127.425 269.9

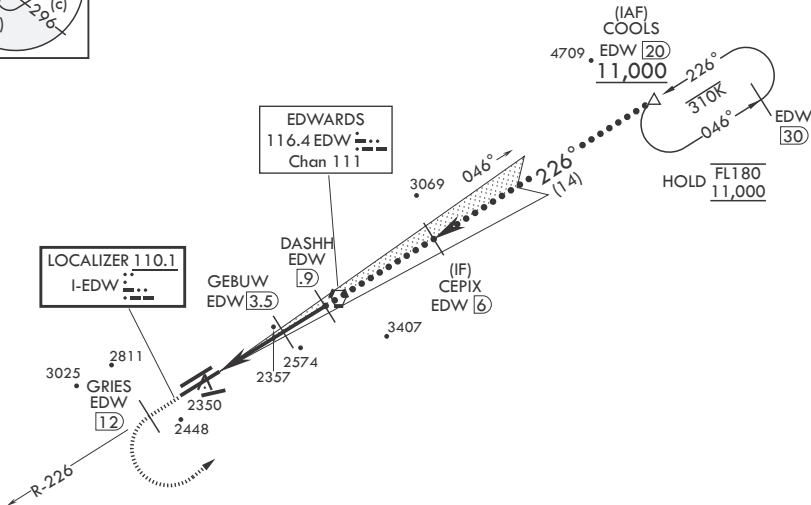
JOSHUA APP CON/DEP CON
133.65 348.7

TOWER★
120.7 (CTAF) 318.1 (CTAF)

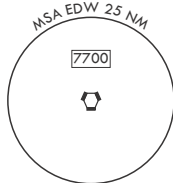
GND CON
121.8 225.4



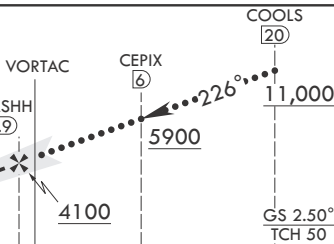
5073



4120



EMERG SAFE ALT 100 NM 16,500

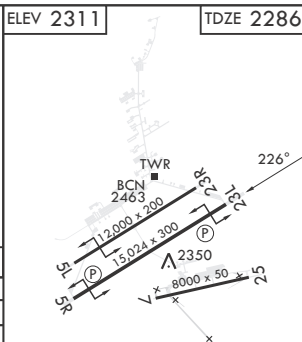


ELEV 2311

TDZE 2286



CATEGORY	C	D	E
S-ILS 23L	2486-¾	200	(200-¾)
S-LOC 23L	2540-¾	254	(300-¾)
C CIRCLING*	2880-1½ 569 (600-1½)	2880-2	569 (600-2)



HIRL Rwy 5R-23L
REIL Rwy 23L

EDWARDS, CALIFORNIA

34°54'N - 117°53'W

EDWARDS AFB (KEDW)

Amdt 1 30JAN20

HI-ILS or LOC/DME Z RWY 23L