

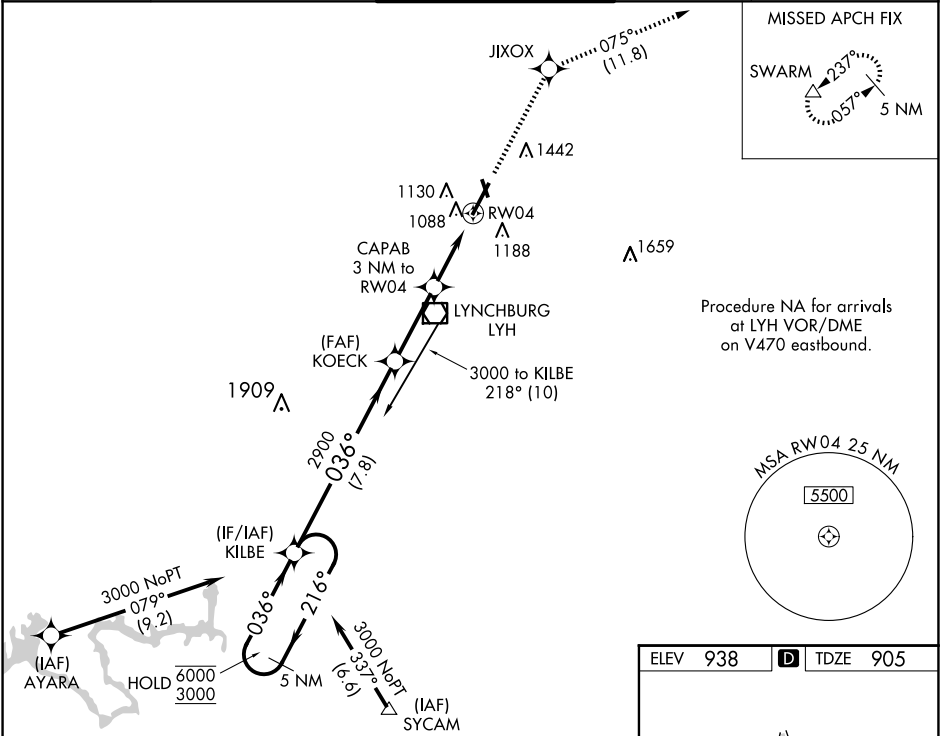
WAAS CH 58205 W04A	APP CRS 036°	Rwy Idg TDZE 905 Apt Elev 938
--	------------------------	---

RNAV (GPS) RWY 4

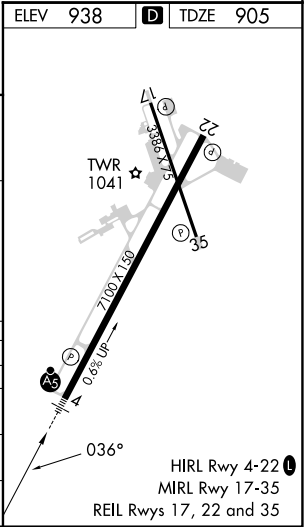
LYNCHBURG RGNL/PRESTON GLENN FLD (LYH)

RNP APCH.	MALSR	MISSED APPROACH: Climb to 3500 direct JIXOX and track 075° to SWARM and hold.
For uncompensated Baro-VNAV systems, LNAV/VNAV NA below -16°C or above 47°C. For inop ALS, increase LNAV Cat A and B visibility to RVR 5000. Circling Rwy 17 NA at night.		

ATIS 119.8	ROANOKE APP CON 135.0 254.325	LYNCHBURG TOWER ★ 127.65 (CTAF) 0 257.8	GND CON 121.9	UNICOM 122.95
----------------------	---	---	-------------------------	-------------------------



5 NM Holding Pattern		3500 ↑		JIXOX ✦		tr 075° ↻		SWARM △	
KILBE		KOECK						*LNAV only	
6000 ← 216°		2900		CAPAB 3 NM to RW04		*1.4 NM to RW04			
3000 → 036°		*1900		RW04		RW04			
GP 3.00° TCH 58		2900							
7.8 NM		3 NM		1.6 NM		1.4 NM			
CATEGORY	A	B	C	D					
LPV DA	1175/40		270 (300-¾)						
LNAV/VNAV DA	1394/60		489 (500-1¼)						
LNAV MDA	1400/40 495 (500-¾)		1400/50 495 (500-1)						
CIRCLING	1660-1 722 (800-1)	1780-1¼ 842 (900-1¼)	1800-2½ 862 (900-2½)	1800-2¾ 862 (900-2¾)					



RNAV (GPS) RWY 4

NE-3, 10 JUL 2025 to 07 AUG 2025

NE-3, 10 JUL 2025 to 07 AUG 2025