

WAAS CH 72905 W04A	APP CRS 039°	Rwy Idg TDZE 2885 Apt Elev 2885
--	------------------------	---

RNAV (GPS) RWY 4

LIBERAL MID-AMERICA RGNL (L.B.L.)

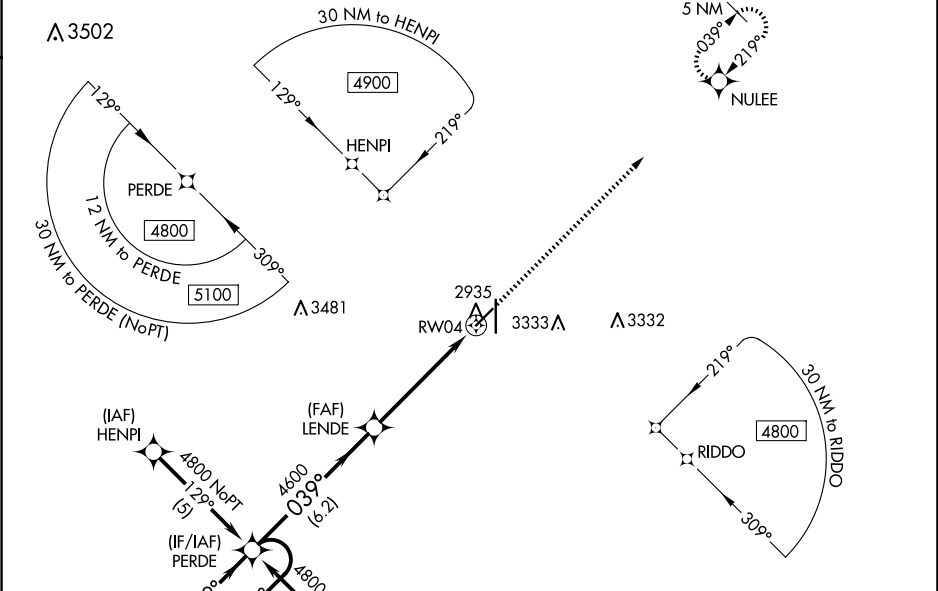
RNP APCH - GPS.

⚠

For uncompensated Baro-VNAV systems, LNAV/VNAV NA below -20°C or above 54°C.
Circling NA east of Rwy 17-35. When local altimeter setting not received, use GUY altimeter setting and increase LPV DA to 3248 feet; increase LNAV/VNAV DA to 3412 feet and all visibilities $\frac{3}{8}$ SM. Increase all MDAs 120 feet and LNAV visibility Cat C/D $\frac{3}{8}$ SM, and Circling visibility Cat C/D $\frac{1}{4}$ SM. Baro-VNAV and VDP NA when using GUY altimeter setting.

MISSED APPROACH: Climb to 4800 direct NULEE and hold.

AWOS-3PT 118.375	KANSAS CITY CENTER 134.0 257.625	UNICOM 122.8 (CTAF)
----------------------------	--	-------------------------------



ELEV 2885 TDZE 2885	
 4800 ← 219° 039° → GP 3.00° TCH 39	
 PERDE (4800) → 039° → LEND E (4600) → 039° → RWY 04 (2935) Distances: 6.2 NM, 3.7 NM, 1.5 NM	
CATEGORY	A B C D
LPV DA	3136-1 251 (300-1)
LNAV/ VNAV DA	3300-1 $\frac{3}{8}$ 415 (500-1 $\frac{3}{8}$)
LNAV MDA	3400-1 515 (600-1) 3400-1 $\frac{3}{8}$ 515 (600-1 $\frac{3}{8}$)
CIRCLING	3400-1 515 (600-1) 3400-1 $\frac{1}{2}$ 515 (600-1 $\frac{1}{2}$) 3640-2 $\frac{1}{2}$ 755 (800-2 $\frac{1}{2}$)

