
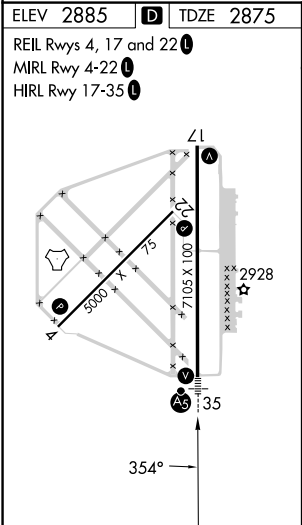
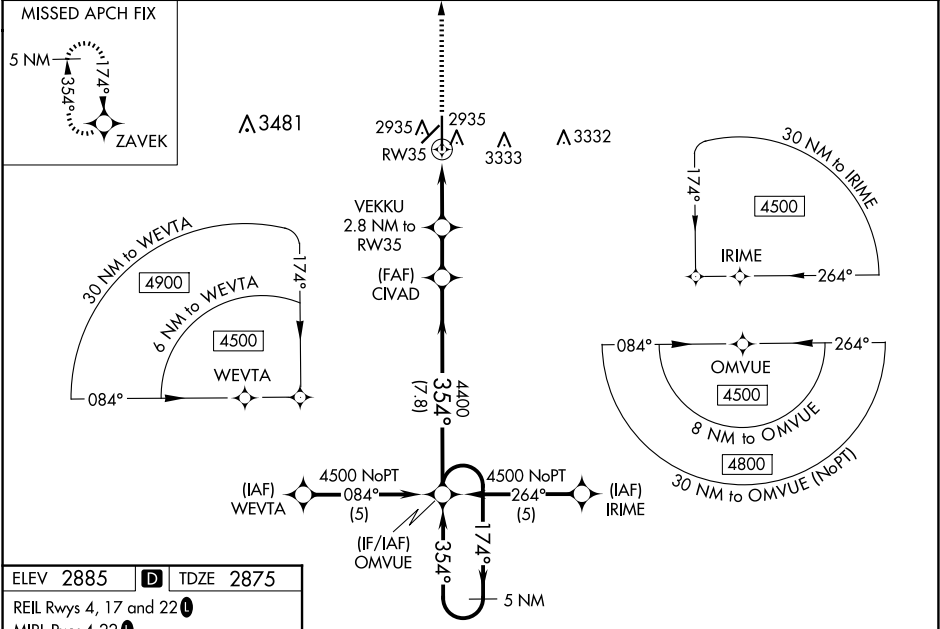


WAAS CH 63005 W35A	APP CRS 354°	Rwy Idg TDZE Apt Elev	7105 2875 2885
--	------------------------	-----------------------------	---

RNAV (GPS) RWY 35
LIBERAL MID-AMERICA RGNL (L.B.L.)

RNP APCH - GPS. For uncompensated Baro-VNAV systems, LNAV/VNAV NA below -20°C or above 54°C. Circling NA east of Rwy 17-35. When local altimeter setting not received, use GUY altimeter setting and increase LPV DA to 3187 feet; increase LNAV/VNAV DA to 3237 feet and all visibilities ¼ SM. Increase all MDAs 120 feet and LNAV visibility Cat C/D ¾ SM, and Circling visibility Cat C/D ¼ SM. Baro-VNAV and VDP NA when using GUY altimeter setting.	MALSR 	MISSED APPROACH: Climb to 4600 direct ZAVEK and hold.
---	--	---

AWOS-3PT 118.375	KANSAS CITY CENTER 134.0 257.625	UNICOM 122.8 (CTAF) 0
----------------------------	--	---------------------------------



4600	ZAVEK	CIVAD	OMVUE	5 NM Holding Pattern
VEKKU 2.8 NM to RW35	0.8 NM to RW35	4400	354°	174°
3820	4400	4500	GP 3.00°	TCH 56
0.8	2 NM	1.8 NM	7.8 NM	
CATEGORY	A	B	C	D
LPV DA	3075-½	200 (200-½)		
LNAV/VNAV DA	3125-½	250 (300-½)		
LNAV MDA	3200-½	325 (400-½)		
CIRCLING	3280-1 395 (400-1)	3340-1 455 (500-1)	3400-1½ 515 (600-1½)	3460-2 575 (600-2)

NC-2, 10 JUL 2025 to 07 AUG 2025

NC-2, 10 JUL 2025 to 07 AUG 2025