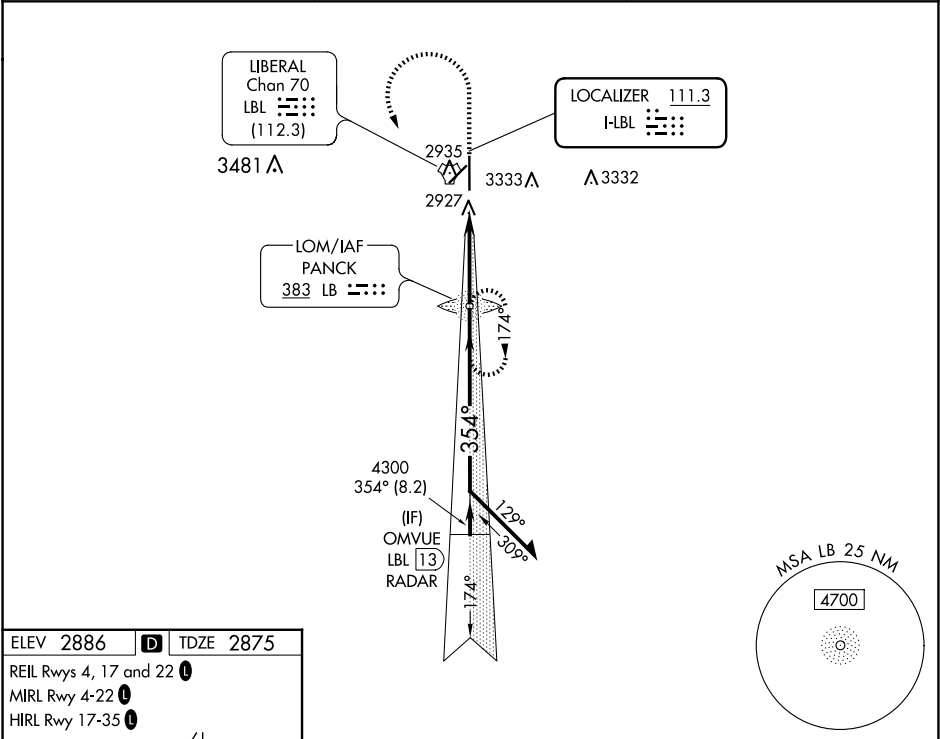


LOC I-LBL 111.3	APP CRS 354°	Rwy Idg TDZE Apt Elev 7105 2875 2886
---------------------------	------------------------	--

ILS or LOC RWY 35
LIBERAL MID-AMERICA RGNL (L.B.L.)

ADF or RADAR required.	MALSR 	MISSED APPROACH: Climb to 4000 then climbing left turn to 4600 direct PANCK LOM and hold.
Circling NA east of Rwy 17-35. For inop ALS, increase S-LOC 35 Cats C/D visibility to ½ SM.		

AWOS-3PT 118.375	KANSAS CITY CENTER 134.0 257.625	UNICOM 122.8 (CTAF) 0
----------------------------	--	---------------------------------



FAF to MAP 4.2 NM					
Knots	60	90	120	150	180
Min:Sec	4:12	2:48	2:06	1:41	1:24

4000	4600	LB		
Remain within 10 NM				
GS 3.00° TCH 56				
CATEGORY	A	B	C	D
S-ILS 35	3075-½ 200 (200-½)			
S-LOC 35	3180-½ 305 (300-½)			
CIRCLING	3280-1 394 (400-1)	3400-1 514 (600-1)	3400-1½ 514 (600-1½)	3460-2 574 (600-2)