

KNOB NOSTER, MISSOURI

TACAN Y RWY 19

TACAN SZL Chan 35	APCH CRS 198°	Rwy Idg TDZE Arprt Elev	12,400 871 871
----------------------	------------------	-------------------------------	----------------------

AL-496 (USAF)

WHITEMAN AFB (KSZL)

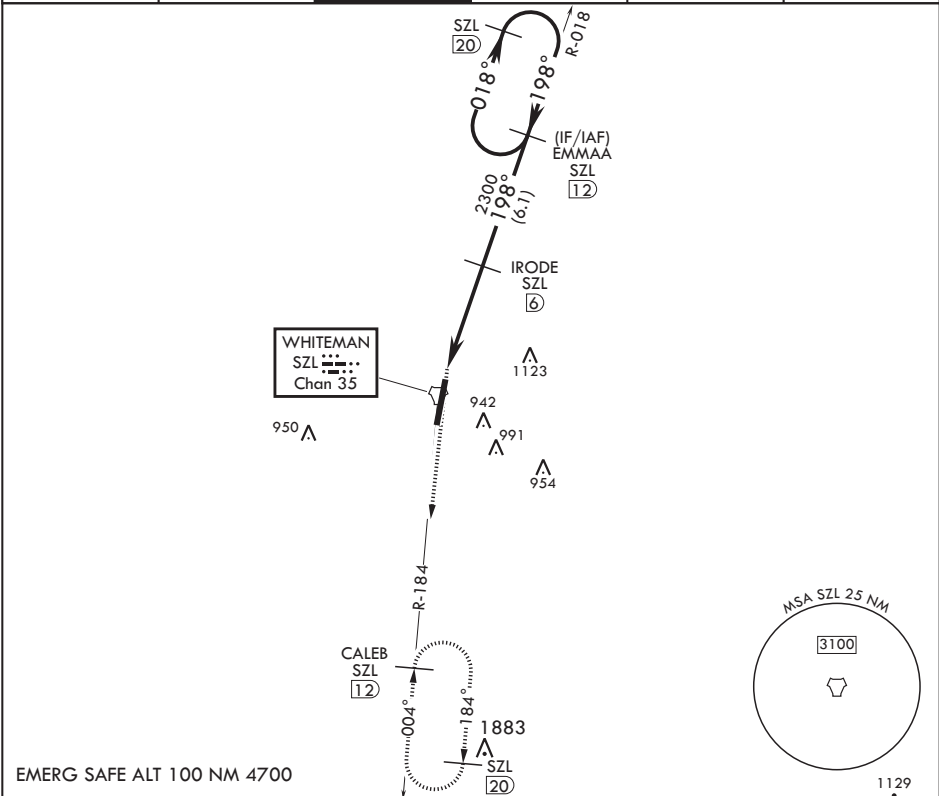
⚠ * When ALS inop, increase CAT AB RVR to 55 and vis to 1 mile, CAT CDE RVR to 60 and vis to 1 1/8 miles.
** Circling not authorized W of Rwy 1-19.

ALSF-1



MISSED APPROACH: Climb to 3000 via SZL TACAN R-184 to CALEB and hold.

ATIS★ 118.725 239.025	APP CON★ 127.45 284.0	TOWER★ 132.4 318.8	GND CON★ 119.125 275.8	CLNC DEL★ 121.75 335.8	ASR
--------------------------	--------------------------	-----------------------	---------------------------	---------------------------	-----



EMERG SAFE ALT 100 NM 4700

3000 SZL R-184

CALEB SZL 12

EMMAA 12

SZL 20 DME Holding Pattern

ELEV 871

TDZE 871

TACAN

SAVBE 1.2

2

2300

198°

3000

018°

198°

≤ 2.50° TCH 47

CATEGORY	A	B	C	D	E
S-19*	1260/24 389 (400-½)	1260/40 389 (400-¾)	1260/40 389 (400-¾)	1260/40 389 (400-¾)	1260/40 389 (400-¾)
C CIRCLING**	1300-1 429 (500-1)	1340-1 469 (500-1)	1340-1½ 469 (500-1½)	1460-2 589 (600-2)	1460-2 589 (600-2)

BCN 1034

TWR 984

HIRL all Rws

12,400' x 130'

0.3% DOWN

198°

61

A1

KNOB NOSTER, MISSOURI

38°44'N - 93°33'W

WHITEMAN AFB (KSZL)

Amdt 1 07NOV19

TACAN Y RWY 19

NC-3, 10 JUL 2025 to 07 AUG 2025

NC-3, 10 JUL 2025 to 07 AUG 2025