

TACAN Y RWY 1

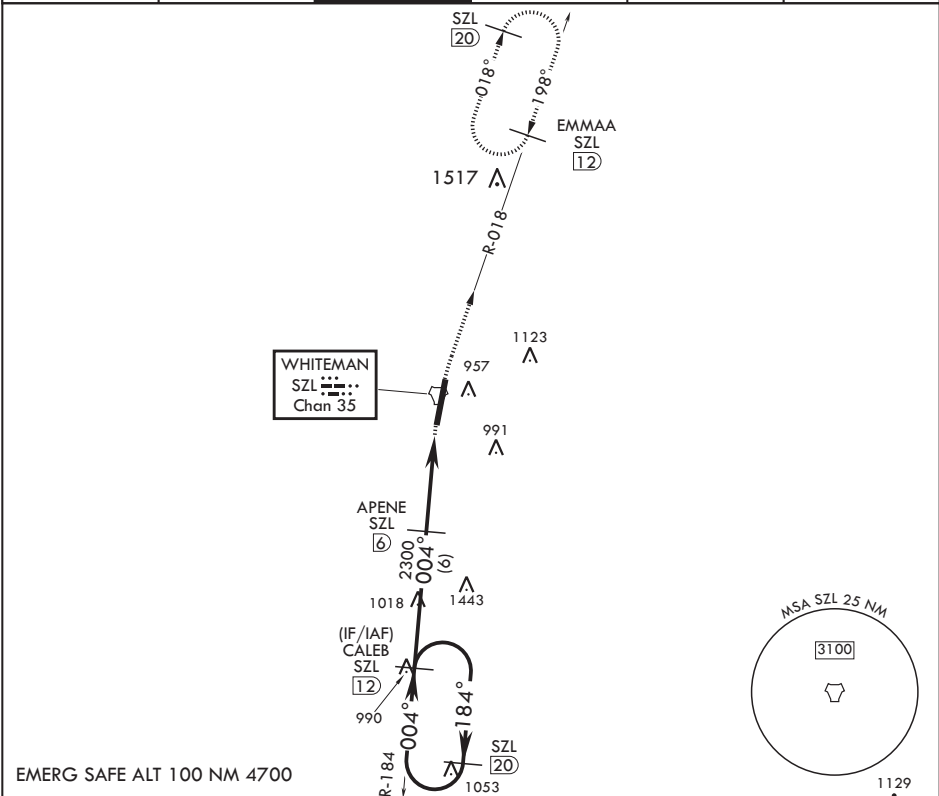
TACAN SZL Chan 35	APCH CRS 004°	Rwy Idg TDZE Arpt Elev	12,400 837 871
----------------------	------------------	------------------------------	----------------------

AL-496 (USAF)

WHITEMAN AFB (KSZL)

<p>▼ * When ALS inop, increase CAT AB RVR to 55 and vis to 1 mile, CAT CDE vis to 1 1/4 miles. ** Circling not authorized W of Rwy 1-19.</p>	<p>ALSF-1</p> 	<p>MISSED APPROACH: Climb to 3000 via SZL TACAN R-018 to EMMAA and hold.</p>
--------------------------------------------------------------------------------------------------------------------------------------------------	-------------------------------------------------------------------------------------------------	------------------------------------------------------------------------------

ATIS★ 118.725 239.025	APP CON★ 127.45 284.0	TOWER★ 132.4 318.8	GND CON★ 119.125 275.8	CLNC DEL★ 121.75 335.8	ASR
--------------------------	--------------------------	-----------------------	---------------------------	---------------------------	-----



SZL 20 DME Holding Pattern CALEB <span style="border: 1px solid black; padding: 0 2px;">12</span> 3000 <span style="margin-left: 20px;">← 184°</span> <span style="margin-left: 100px;">004° →</span> 2.85° <span style="margin-left: 10px;">TCH 51</span>					3000 SZL R-018		EMMAA SZL <span style="border: 1px solid black; padding: 0 2px;">12</span>		ELEV 871		TDZE 837	
2300 APENE <span style="margin-left: 10px;">✕</span> <span style="margin-left: 100px;">004°</span> <span style="margin-left: 150px;">2.5</span> <span style="margin-left: 10px;">COBLU <span style="border: 1px solid black; padding: 0 2px;">1.8</span></span> <span style="margin-left: 10px;">TACAN</span>									8CN 1034 TWR 984 12,400 x 150 0.3% Up		61 <span style="border: 1px solid black; border-radius: 50%; padding: 2px;">P</span> <span style="border: 1px solid black; border-radius: 50%; padding: 2px;">A1</span> 004°	
					4.2 NM		.5					
CATEGORY	A		B		C	D	E					
S-1 *	1260/24 423 (400-½)				1260/40	423	(400-¾)					
<span style="background-color: black; color: white; padding: 2px;">C</span> CIRCLING **	1300-1 429 (500-1)		1340-1 469 (500-1)		1340-1½ 469 (500-1½)	1460-2 589 (600-2)						

HIRL all Rwys