

RNAV (GPS) RWY 19

APCH CRS	Rwy Idg	12,400
190°	TDZE	871
	Arprt Elev	871

AL-496 (USAF)

WHITEMAN AFB (KSZL)

**⚠** \* When ALS inop, increase CAT AB RVR to 55 and vis to 1 mile, CAT CDE RVR to 60 and vis to 1 1/8 miles.  
\*\* Circling not authorized W of Rwy 1-19.

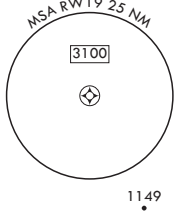
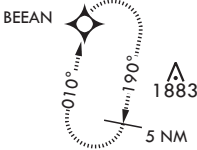
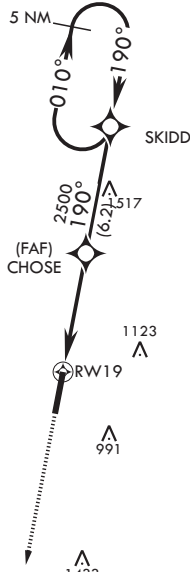
ALSF-1



MISSED APPROACH: Climb to 3000 direct BEEAN and hold.

ATIS★	APP CON★	TOWER★	GND CON★	CLNC DEL★	ASR
118.725 239.025	127.45 284.0	132.4 318.8	119.125 275.8	121.75 335.8	


DME/DME RNP 0.3 N/A



EMERG SAFE ALT 100 NM 4700

3000

BEEAN



5 NM Holding Pattern

010°

190°

3000

SKIDD

CHOSE

1.3 NM to RWY 19

2500

5.8 NM

≤ 2.57°

TCH 47

CATEGORY	A	B	C	D	E
LNAV MDA*	1260/24 389 (400-½)	1260/35 389 (400-¾)	1260/35 389 (400-¾)	1260/35 389 (400-¾)	1260/35 389 (400-¾)
CIRCLING**	1300-1 429 (500-1)	1340-1 469 (500-1)	1340-1½ 469 (500-1½)	1460-2 589 (600-2)	1460-2 589 (600-2)

BCN 1034

TWR 984

12,400 x 150

0.3% DOWN

190°

TDZE 871

ELEV 871

HIRL all Rwys

RNAV (GPS) RWY 19

NC-3, 10 JUL 2025 to 07 AUG 2025

NC-3, 10 JUL 2025 to 07 AUG 2025